

Probe KRAS Split Dual Color FISH Probe  
Product No. SP031

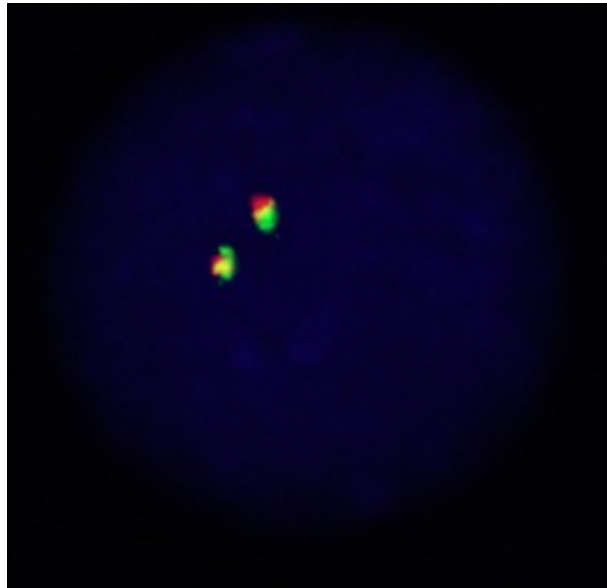
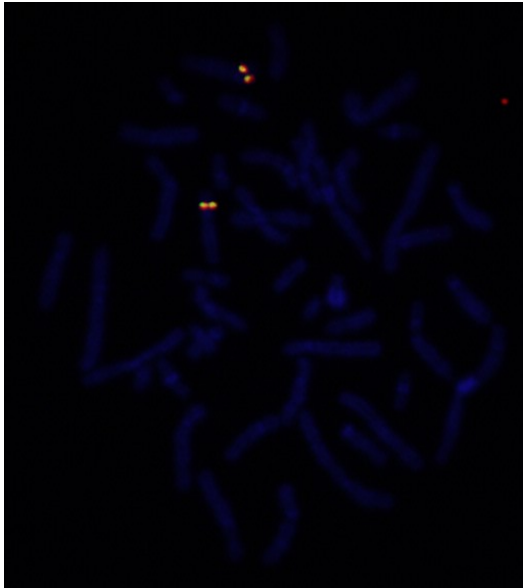
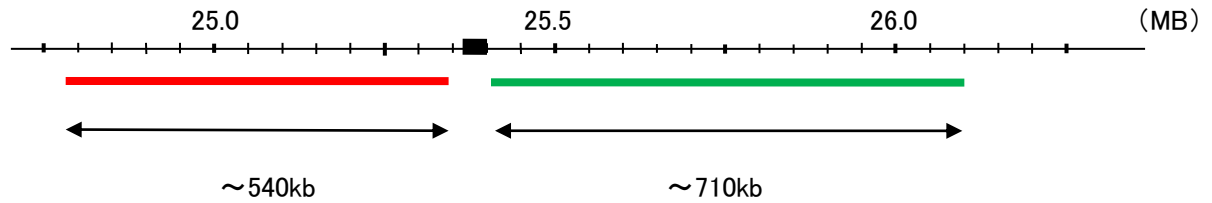
KRAS

Fluorophore TexRed, FITC

Location 12p12.1

Also known as NS; NS3; CFC2; RALD; KRAS1; KRAS2; RASK2; KI-RAS; C-K-RAS; K-RAS2A; K-RAS2B; K-RAS4A; K-RAS4B

KRAS



Representative images of normal human cell (lymphocyte) stain with the dual color FISH probe. The left image is chromosomes at metaphase, and the right image is an interphase nucleus.