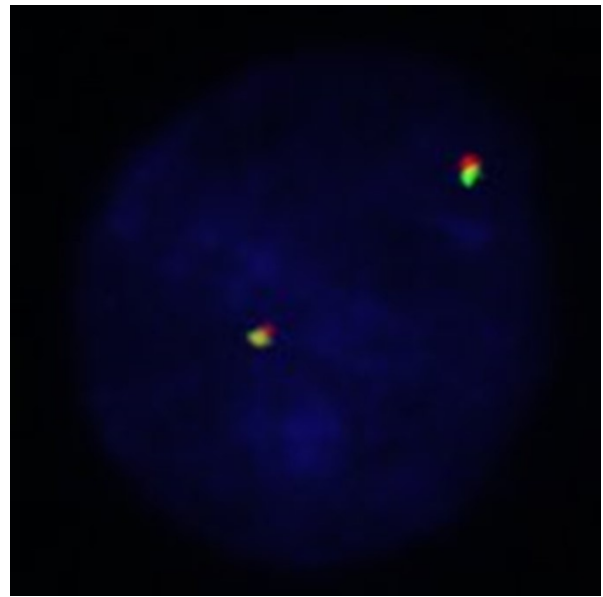
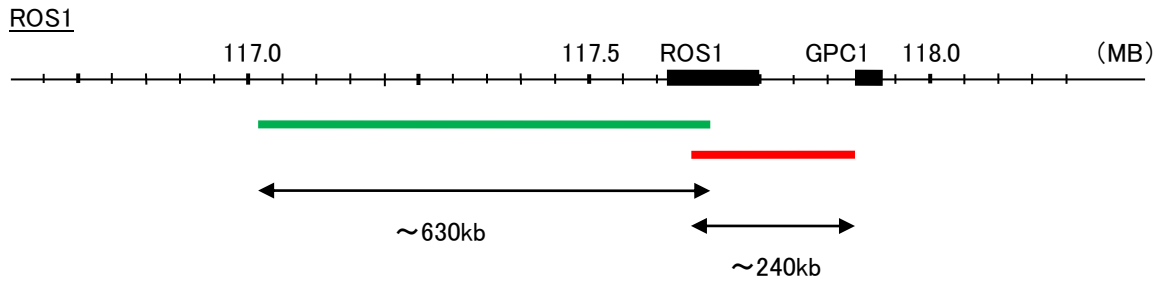


Probe ROS1 Split Dual Color FISH Probe (V.3)
Product No. SP053
Also known as ROS; MCF3; c-ros-1

ROS1
Fluorophore TexRed, FITC
Location 6q22.1



Representative images of normal human cell (lymphocyte) stain with the dual color FISH probe. The left image is chromosomes at metaphase, and the right image is an interphase nucleus.