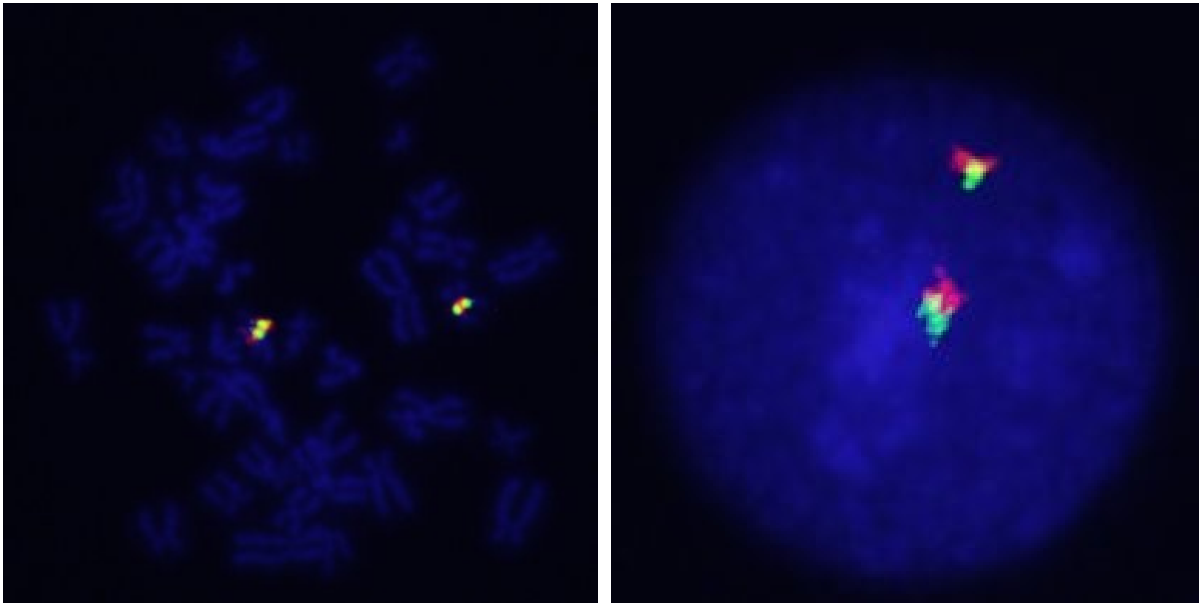
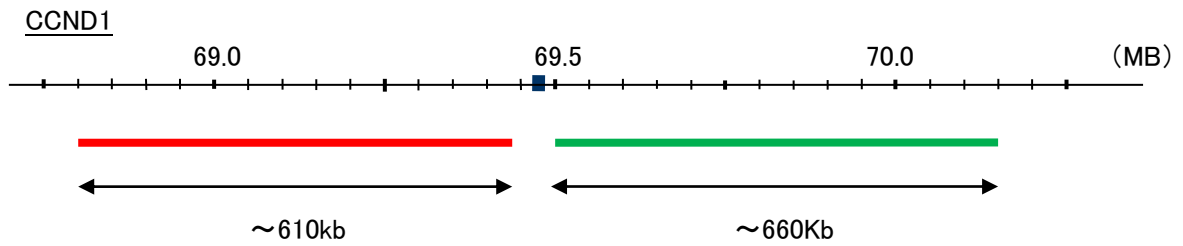


Probe CCND1 Split Dual Color FISH Probe
Product No SP066

CCND1
Fluorophore TexRed, FITC
Location 11q13
Also known as BCL1; PRAD1; U21B31; D11S287E



Representative images of normal human cell (lymphocyte) stain with the dual color FISH probe. The left image is chromosomes at metaphase, and the right image is an interphase nucleus.