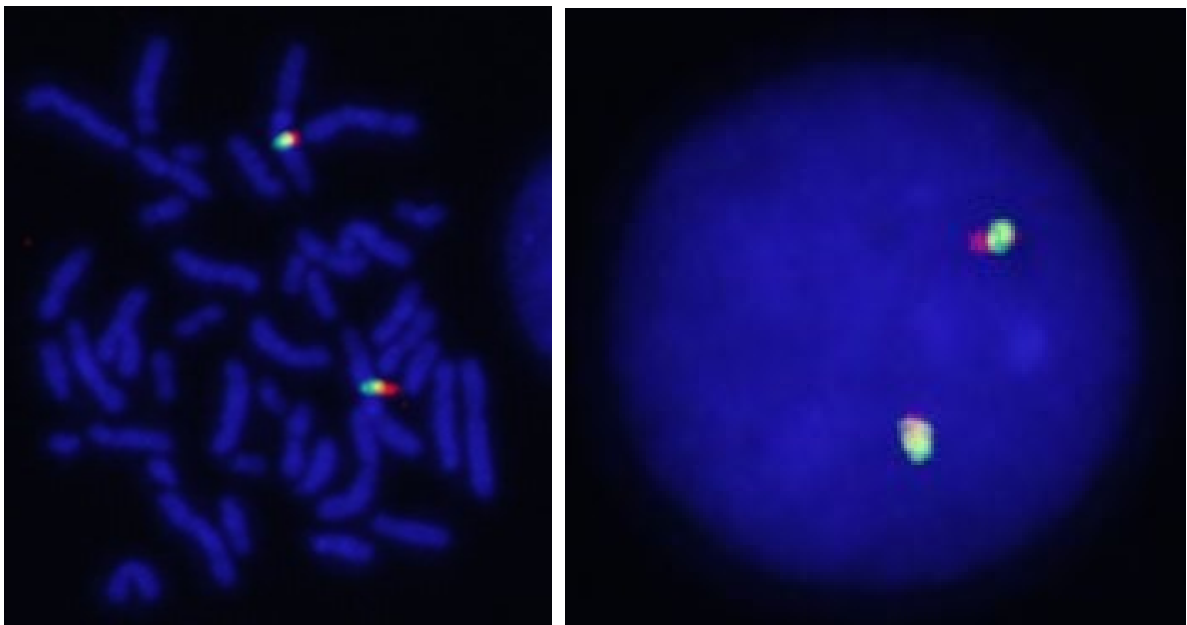
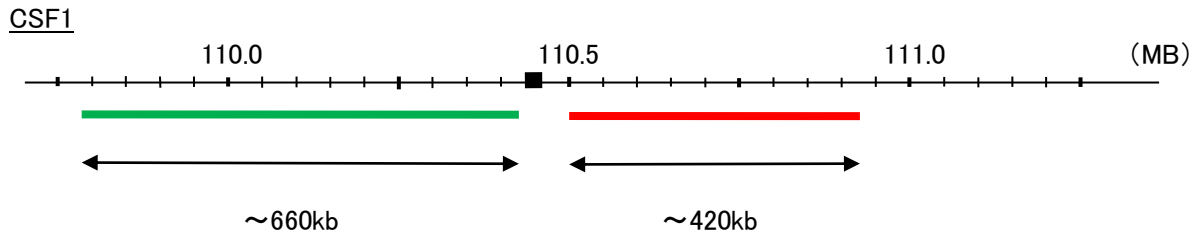


Probe CSF1 Split Dual Color FISH Probe  
Product No SP071

CSF1  
Fluorophore TexRed, FITC  
Location 1p13.3  
Also known as MCSF; CSF-1



Representative images of normal human cell (lymphocyte) stain with the dual color FISH probe. The left image is chromosomes at metaphase, and the right image is an interphase nucleus.