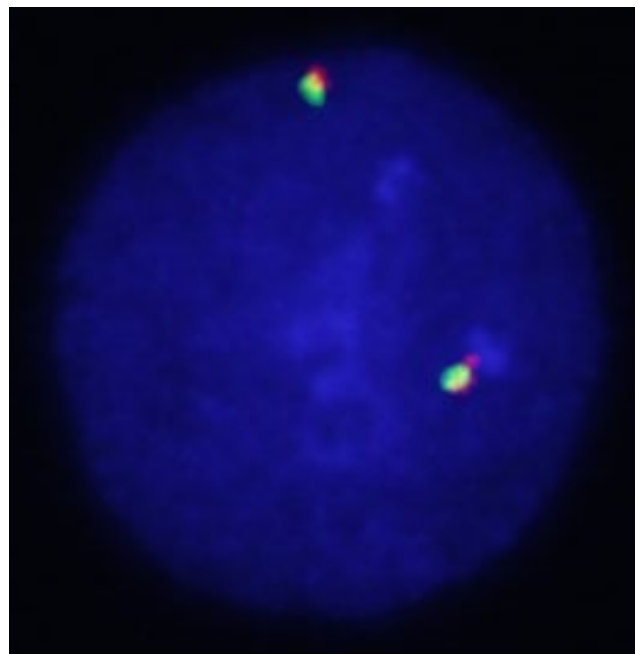
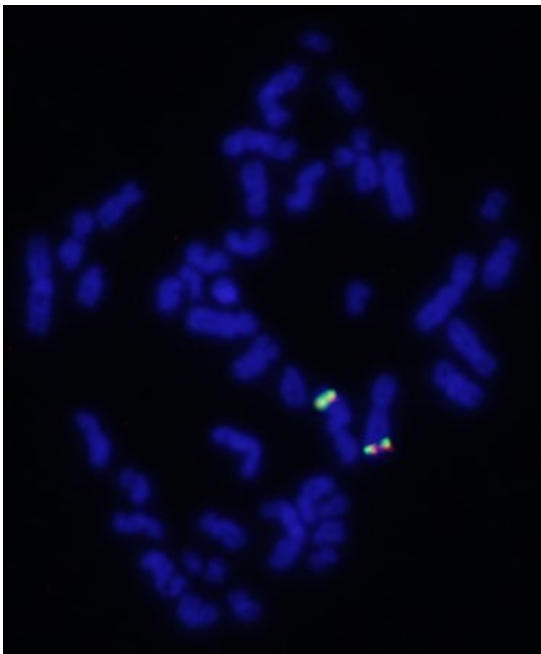
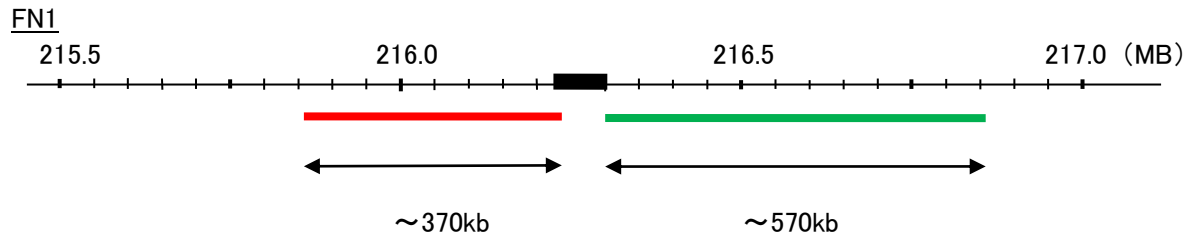


Probe FN1 Split Dual Color FISH Probe  
Product No SP072

FN1  
Fluorophore TexRed, FITC  
Location 2q35  
Also known as FN; CIG; FNZ; MSF; ED-B; FINC; GFND; LETS; GFND2



Representative images of normal human cell (lymphocyte) stain with the dual color FISH probe. The left image is chromosomes at metaphase, and the right image is an interphase nucleus.