

Probe PD-L1/PD-L2/CEN9q Tricolor Split FISH Probe
Product No SP076

PD-L1

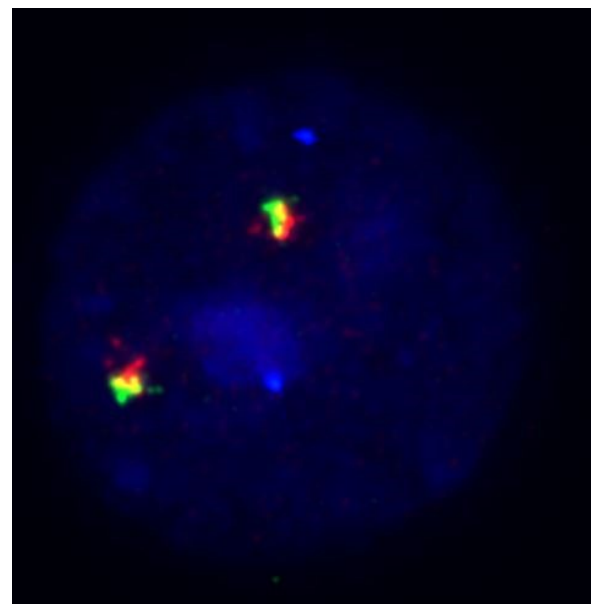
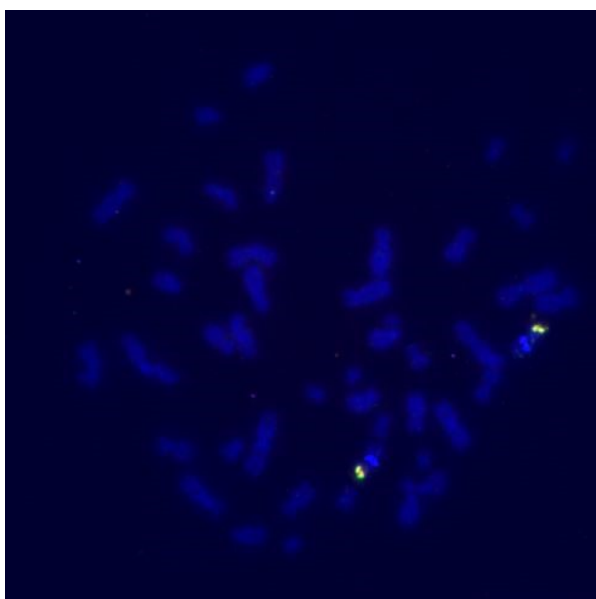
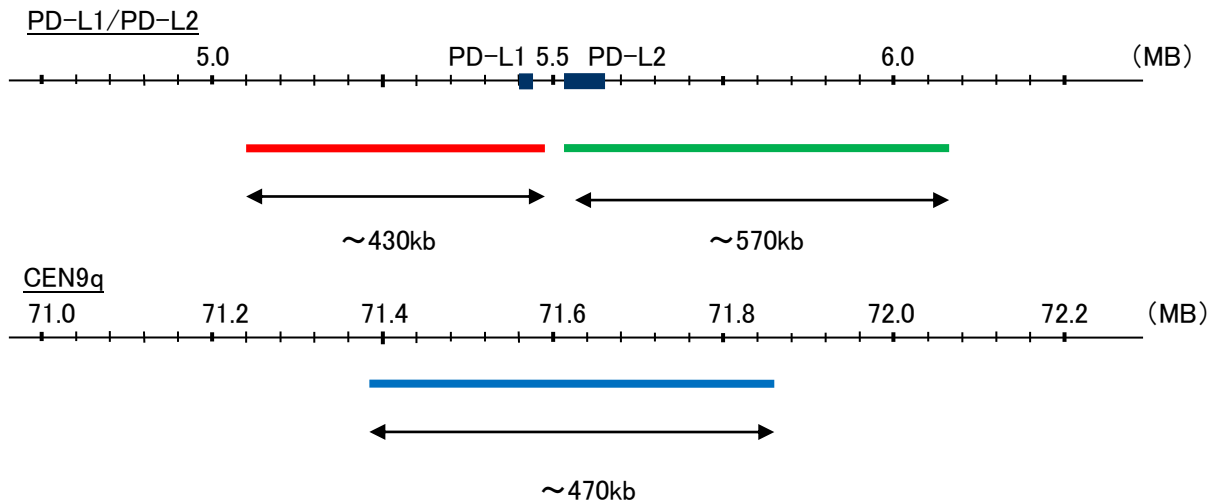
Probe Size Approximately 430kb
Fluorophore TexRed
Location 9p24
Also known as B7-H; B7H1; PDL1; CD274; PDCD1L1; PDCD1LG1

PD-L2

Probe Size Approximately 550kb
Fluorophore FITC
Location 9p24
Also known as B7DC; B7dc; PDL2; CD273; PDCD1LG2; PDCD1L2; bA574F11.2

CEN9q

Probe Size Approximately 470kb
Fluorophore DEAC
Location 9q21



Representative images of normal human cell (lymphocyte) stain with the dual color FISH probe. The left image is chromosomes at metaphase, and the right image is an interphase nucleus.