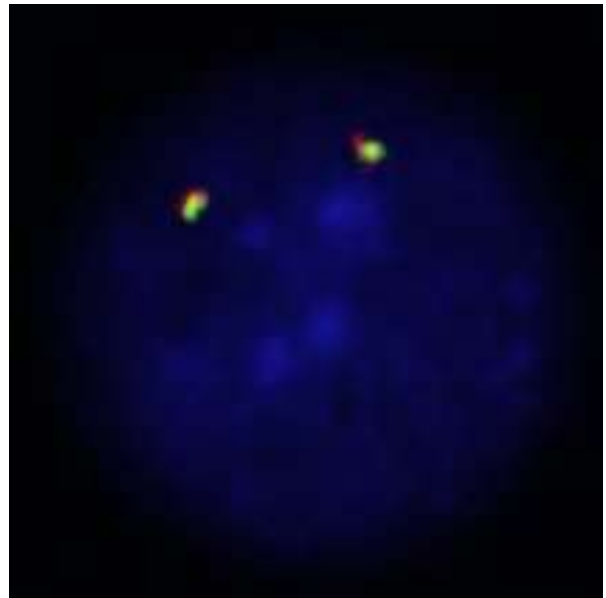
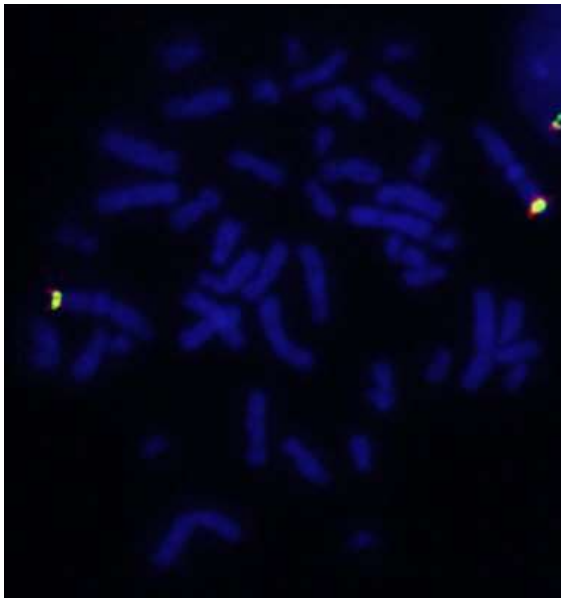
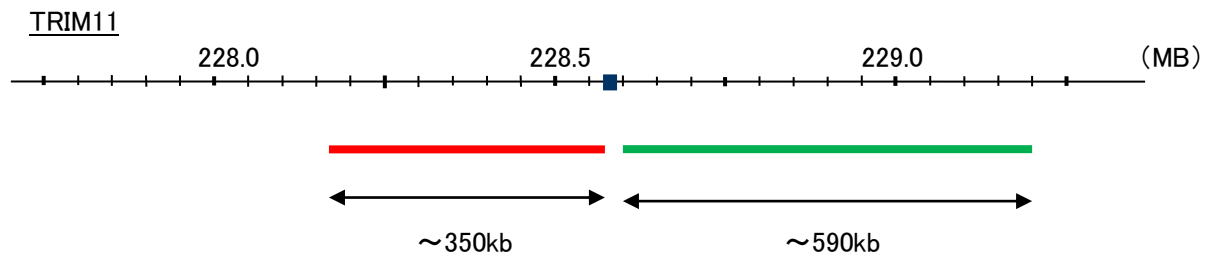


Probe TRIM11 Split Dual Color FISH Probe
Product No SP077

TRIM11
Fluorophore TexRed, FITC
Location 1q42.3
Also known as BIA1; RNF92



Representative images of normal human cell (lymphocyte) stain with the dual color FISH probe. The left image is chromosomes at metaphase, and the right image is an interphase nucleus.