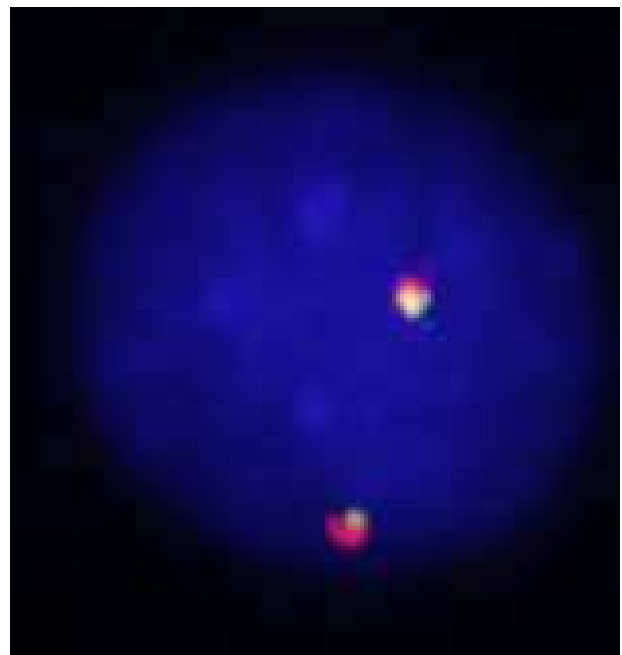
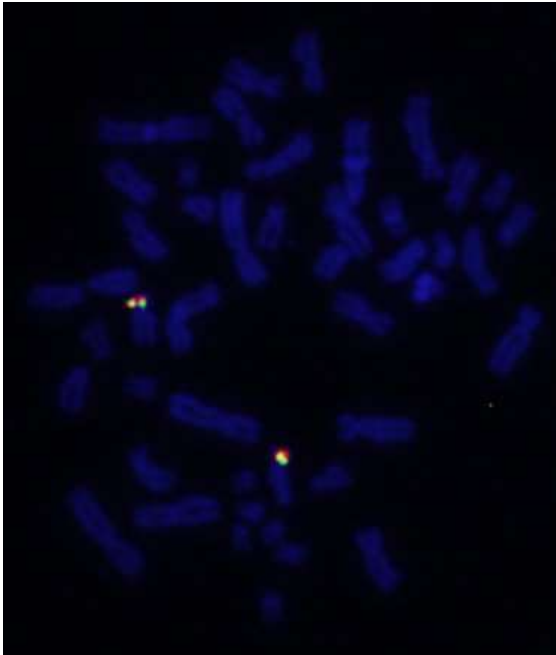
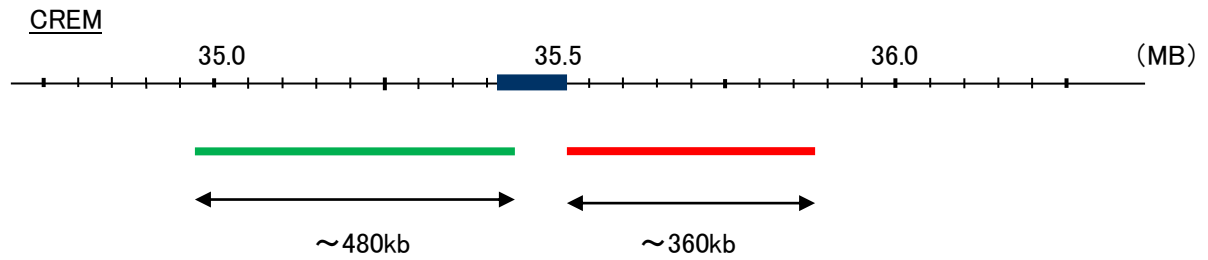


Probe CREM Split Dual Color FISH Probe
Product No. SP084

CREM
Fluorophore TexRed, FITC
Location 10p11.21
Also known as ICER; CREM-2; hCREM-2



Representative images of normal human cell (lymphocyte) stain with the dual color FISH probe. The left image is chromosomes at metaphase, and the right image is an interphase nucleus.