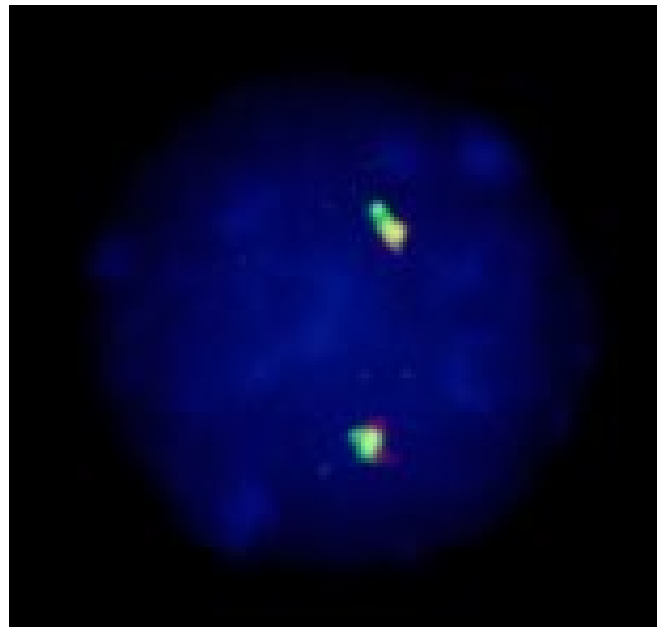
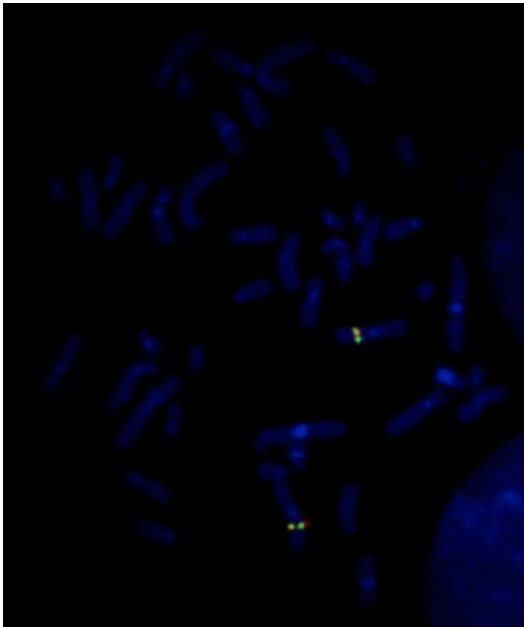
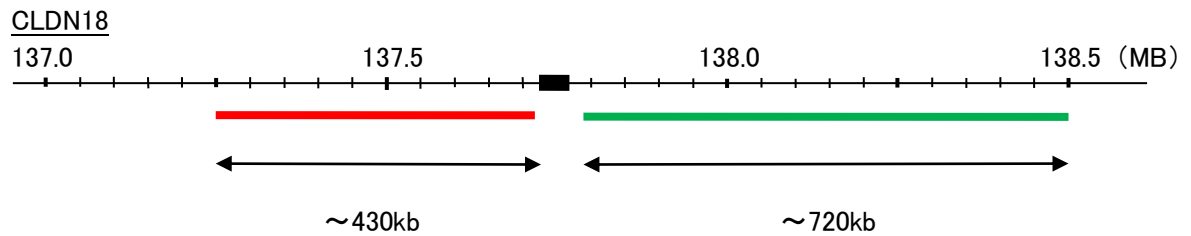


Probe CLDN18 Split Dual Color FISH Probe
Product No. SP038

CLDN18
Fluorophore TexRed, FITC
Location 3q23
Also known as SFTA5; SFTPJ



Representative images of normal human cell (lymphocyte) stain with the dual color FISH probe. The left image is chromosomes at metaphase, and the right image is an interphase nucleus.