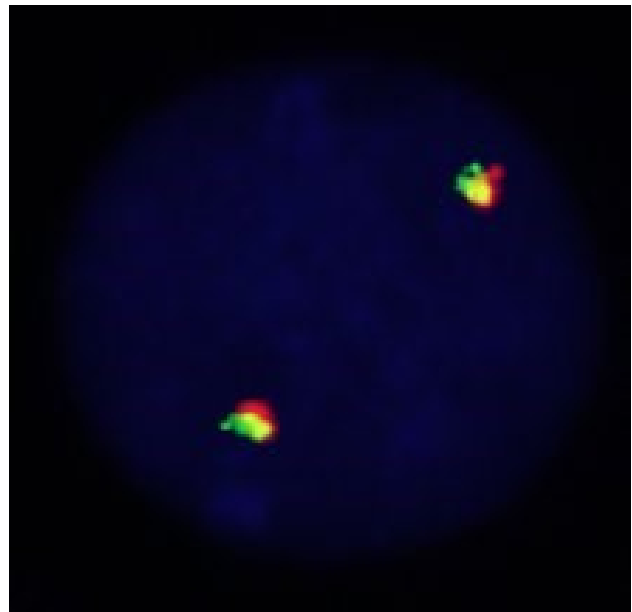
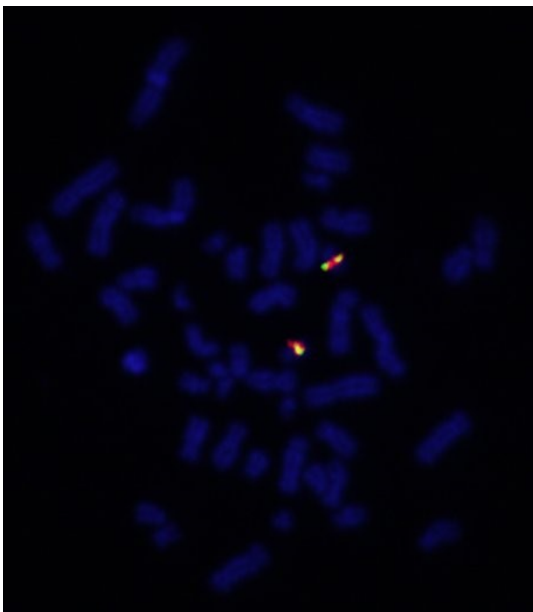
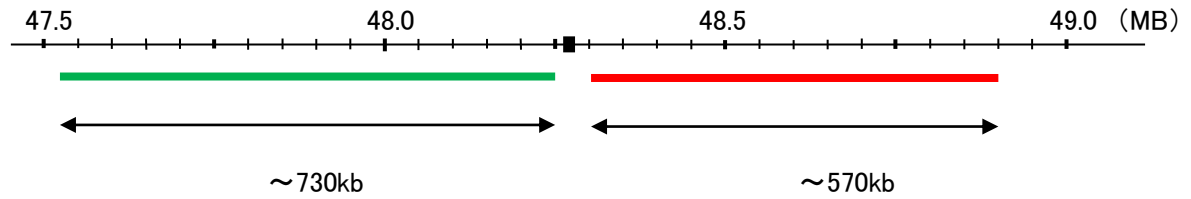


Probe COL1A1 Split Dual Color FISH Probe
Product No. SP044

COL1A1

Fluorophore TexRed, FITC
Location 17q21.33
Also known as OI1; OI2; OI3; OI4; EDSC

COL1A1



Representative images of normal human cell (lymphocyte) stain with the dual color FISH probe. The left image is chromosomes at metaphase, and the right image is an interphase nucleus.