

Probe FGFR1 Split Dual Color FISH Probe
SP026

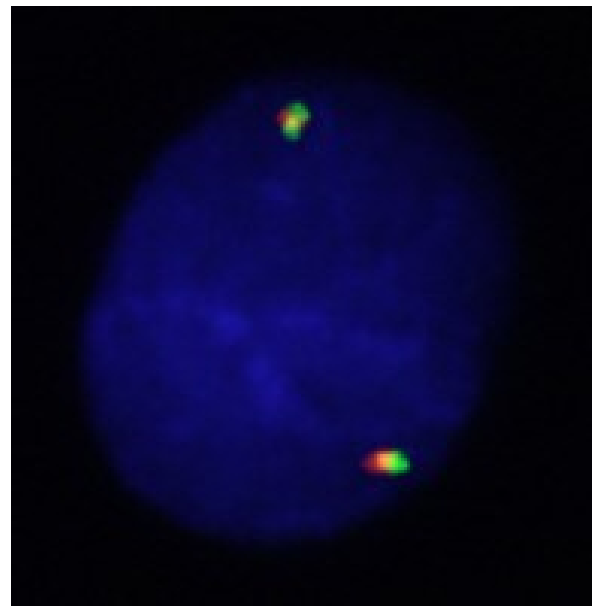
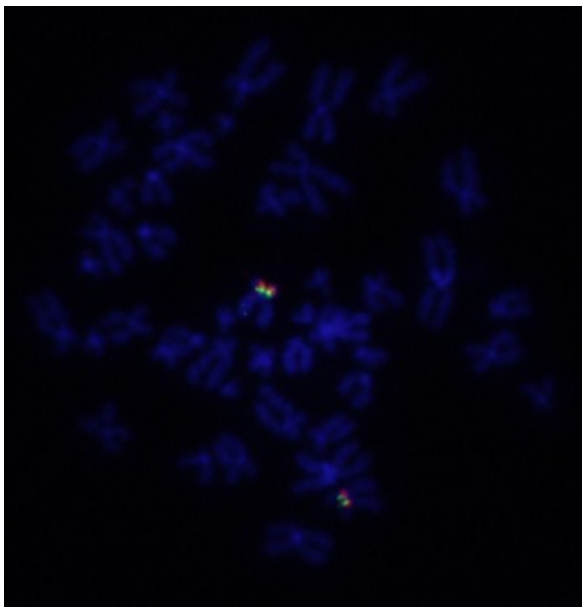
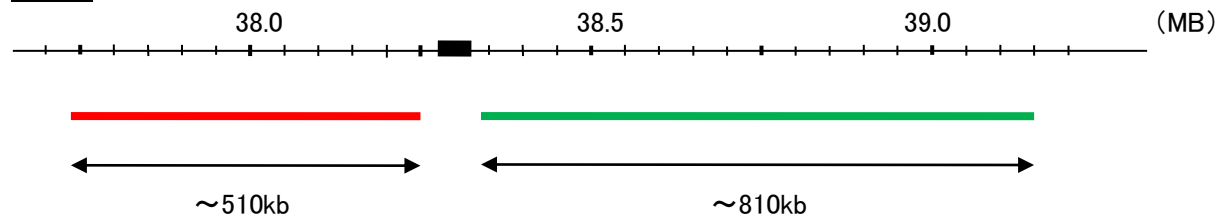
FGFR1

Fluorophore TexRed, FITC

Location 8p12

Also known as CEK; FLG; HH2; OGD; FLT2; KAL2; BFGFR; CD331; FGFBR; FLT-2; HBGFR; N-SAM; FGFR-1; HRTFDS; bFGF-R-1

FGFR1



Representative images of normal human cell (lymphocyte) stain with the dual color FISH probe. The left image is chromosomes at metaphase, and the right image is an interphase nucleus.