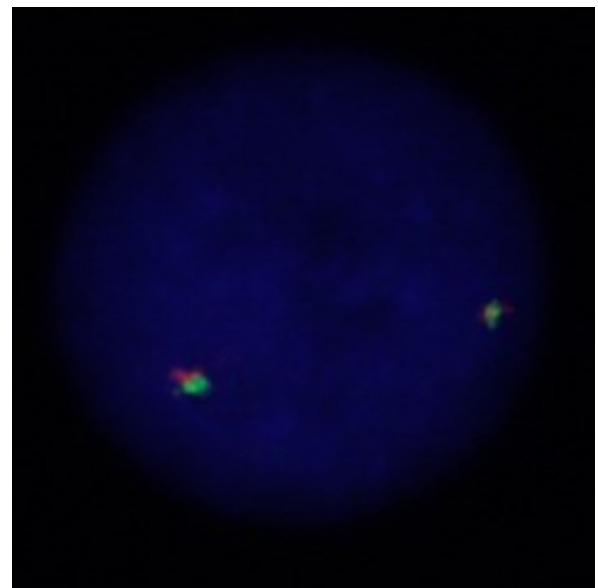
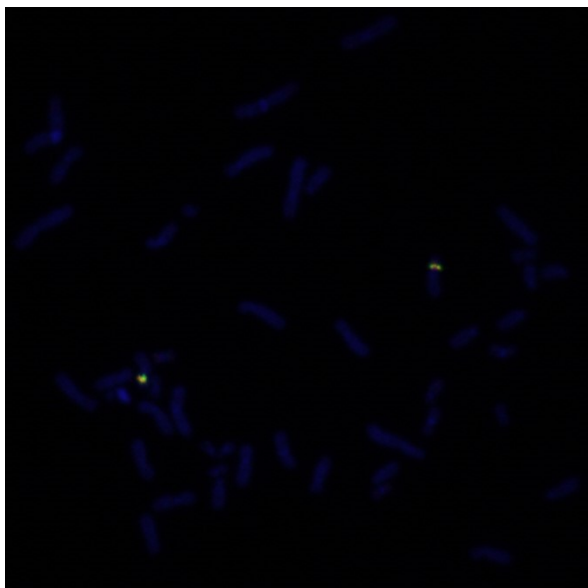
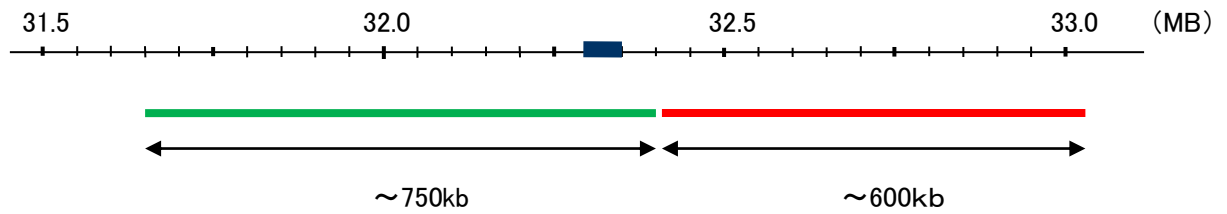


Probe KIF5B Split Dual Color FISH Probe
Product No. SP017

KIF5B

Fluorophore FITC, TexRed
Location 10p11.2
Also known as KNS; KINH; KNS1; UKHC; HEL-S-61



Representative images of normal human cell (lymphocyte) stain with the dual color FISH probe. The left image is chromosomes at metaphase, and the right image is an interphase nucleus.