

Probe FGFR3 Split Dual Color FISH Probe
Product No. SP011

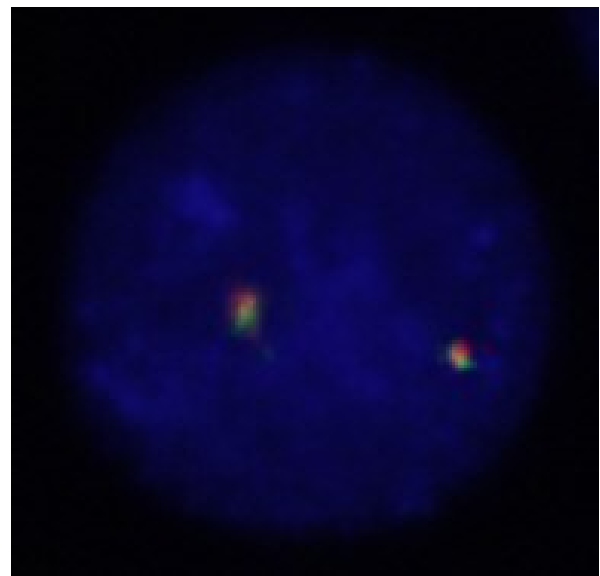
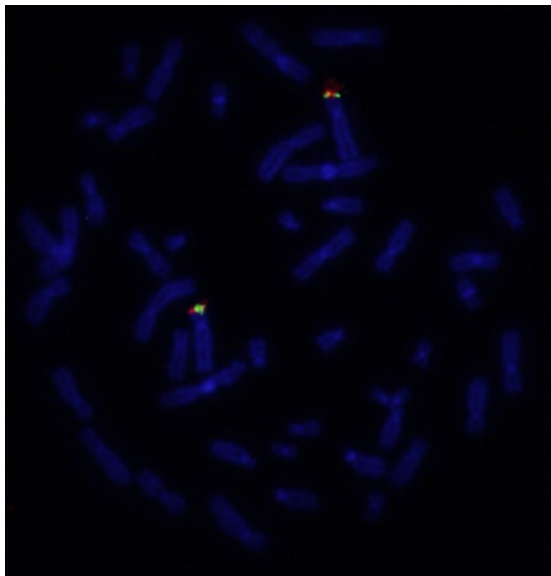
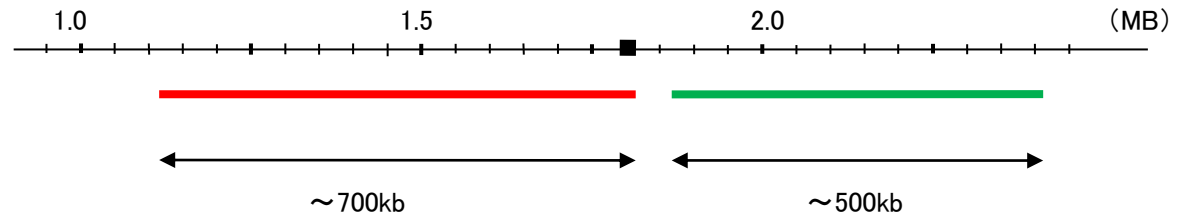
FGFR3

Fluorophore TexRed, FITC

Location 4p16.3

Also known as ACH; CEK2; JTK4; CD333; HSGFR3EX

FGFR3



Representative images of normal human cell (lymphocyte) stain with the dual color FISH probe. The left image is chromosomes at metaphase, and the right image is an interphase nucleus.