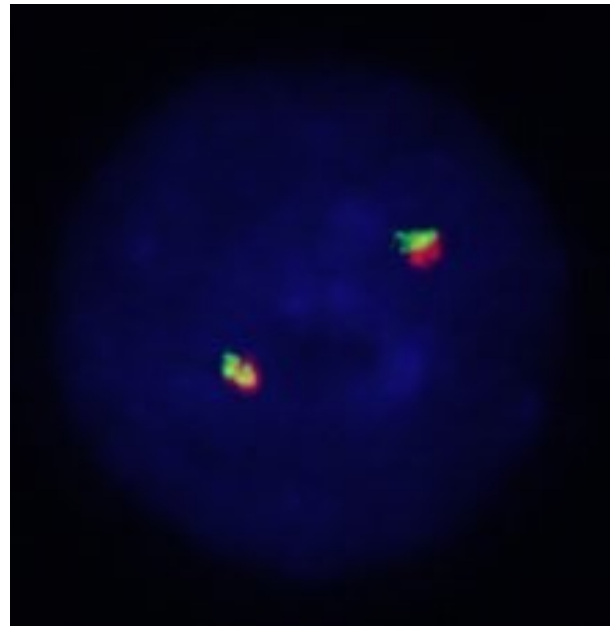
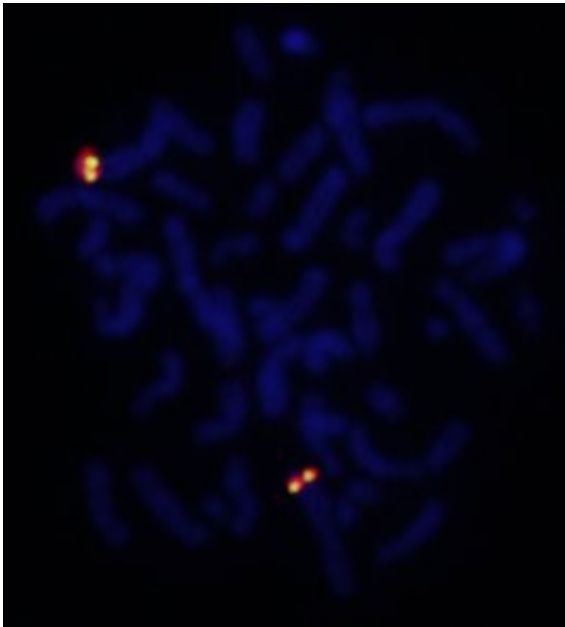
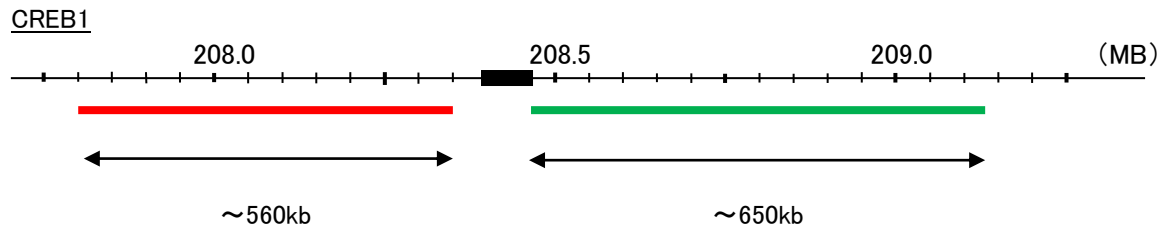


Probe CREB1 Split Dual Color FISH Probe
Product No. SP059

CREB1
Fluorophore TexRed, FITC
Location 2q33.3
Also known as CREB; CREB-1

Storage 4°C



Representative images of normal human cell (lymphocyte) stain with the dual color FISH probe. The left image is chromosomes at metaphase, and the right image is an interphase nucleus.