

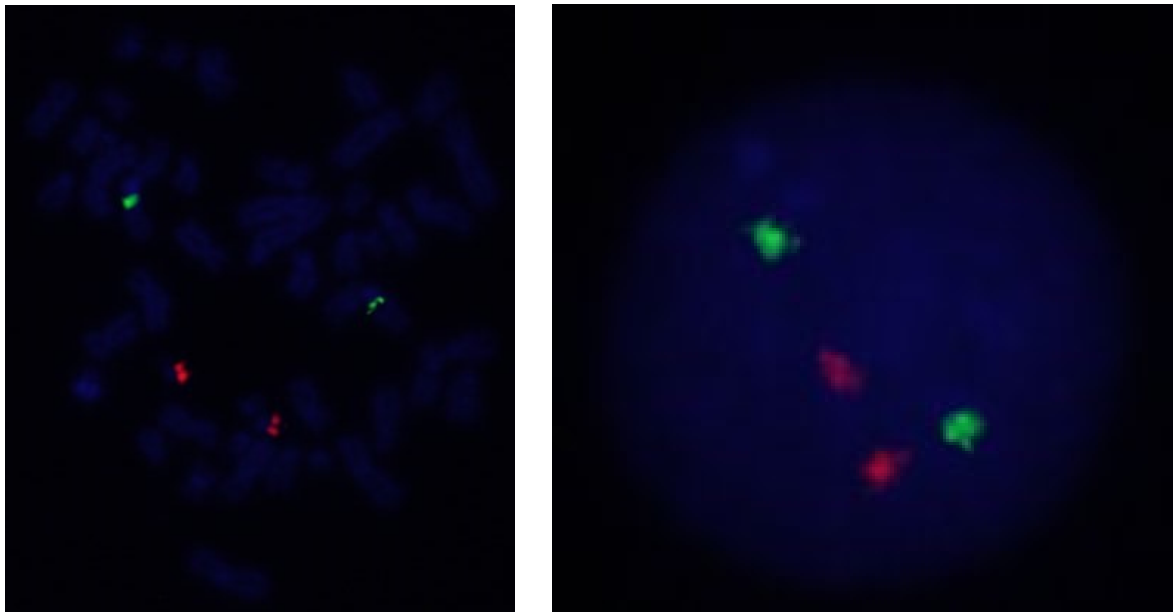
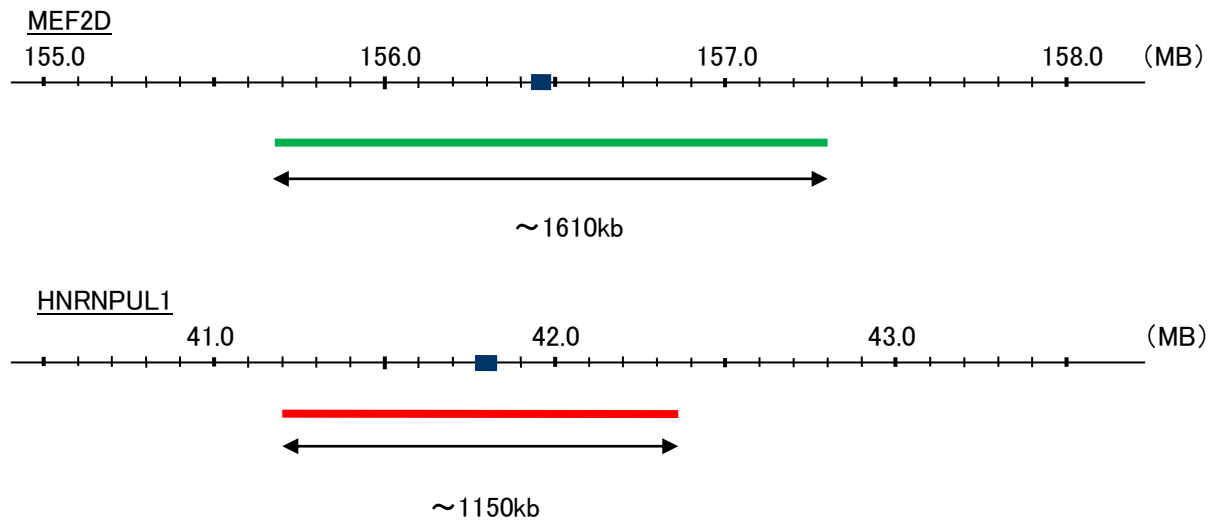
Probe MEF2D/HNRNPUL1, DY Translocation Dual Color FISH Probe
Product No. TR022

MEF2D

Probe Size Approximately 1610kb
Fluorophore FITC
Location 1q12-23

HNRNPUL1

Probe Size Approximately 1150kb
Fluorophore TexRed
Location 19q13.2
Also known as E1BAP5; E1B-AP5; HNRPUL1



Representative images of normal human cell (lymphocyte) stain with the dual color FISH probe. The left image is chromosomes at metaphase, and the right image is an interphase nucleus.