

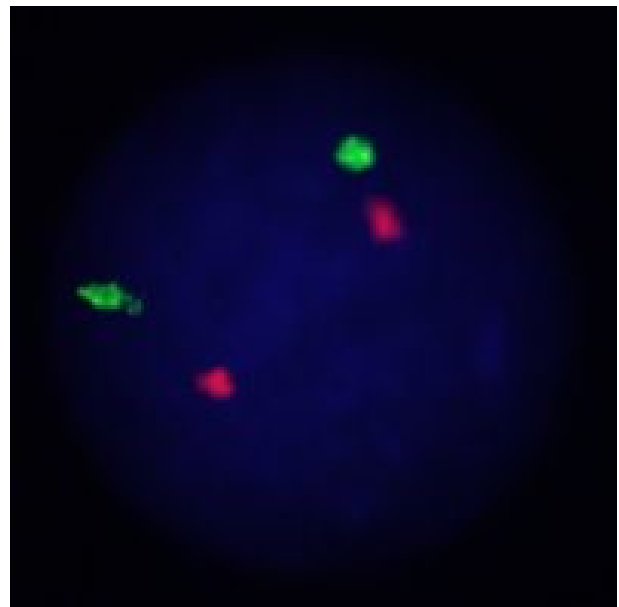
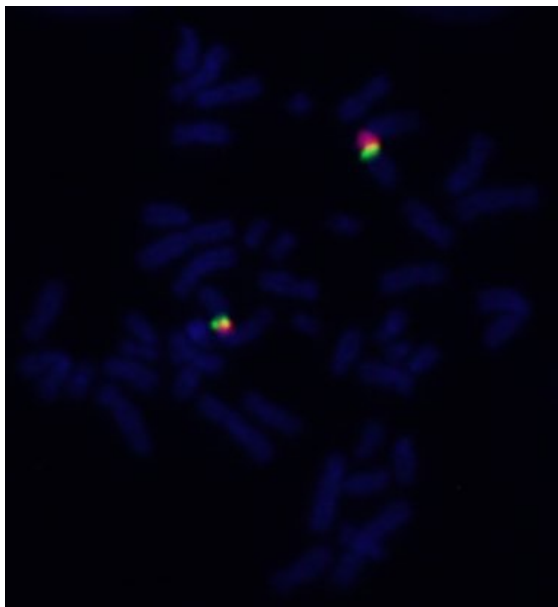
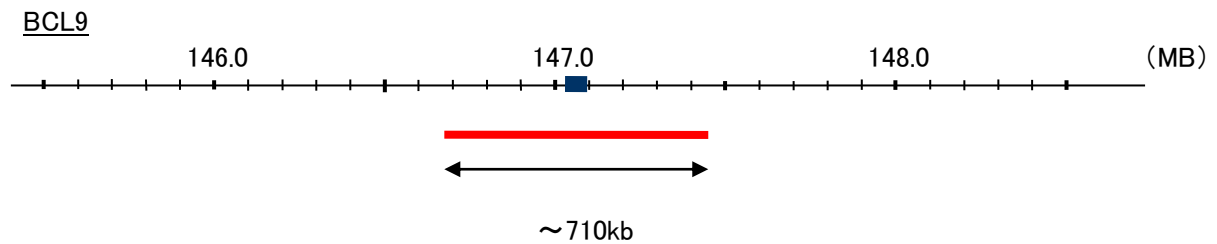
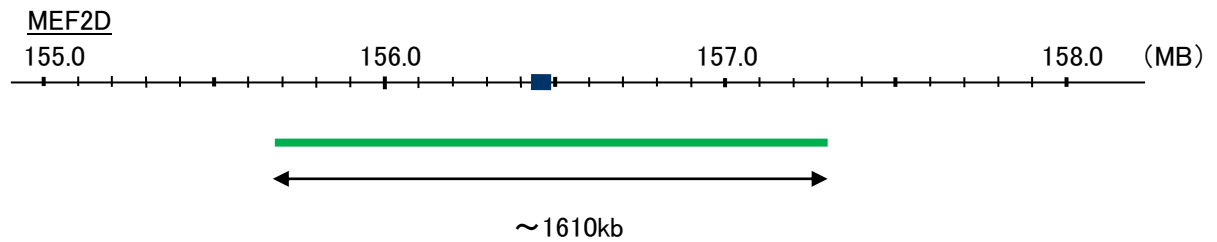
Probe MEF2D/BCL9, DY Translocation Dual Color FISH Probe  
Product No. TR023

MEF2D

Probe Size Approximately 1610kb  
Fluorophore FITC  
Location 1q12-23

BCL9

Probe Size Approximately 710kb  
Fluorophore TexRed  
Location 1q21  
Also known as LGS



Representative images of normal human cell (lymphocyte) stain with the dual color FISH probe. The left image is chromosomes at metaphase, and the right image is an interphase nucleus.