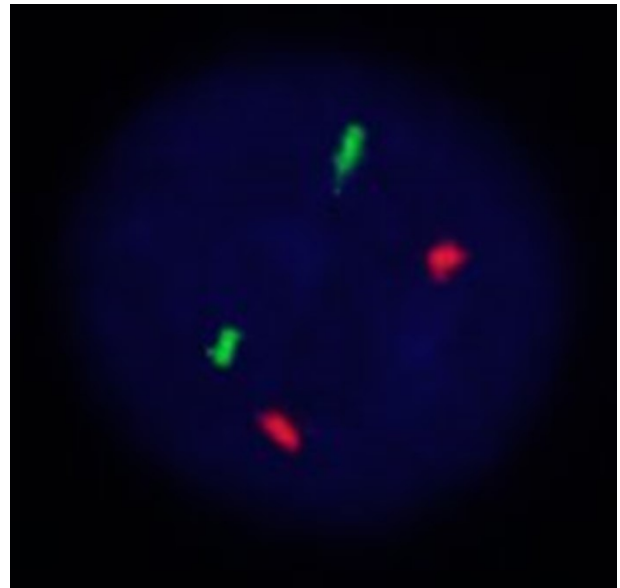
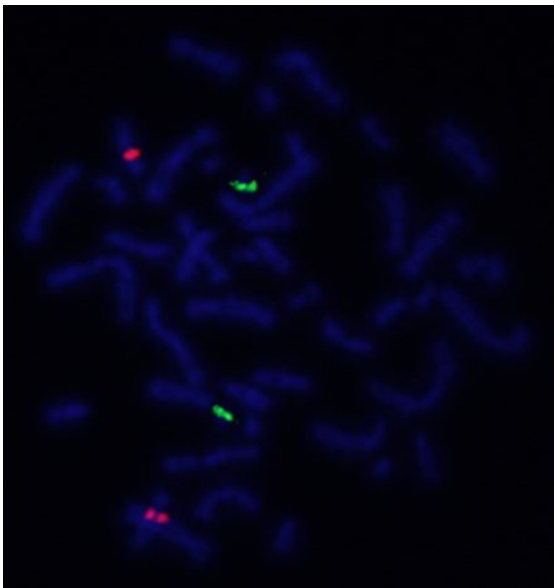
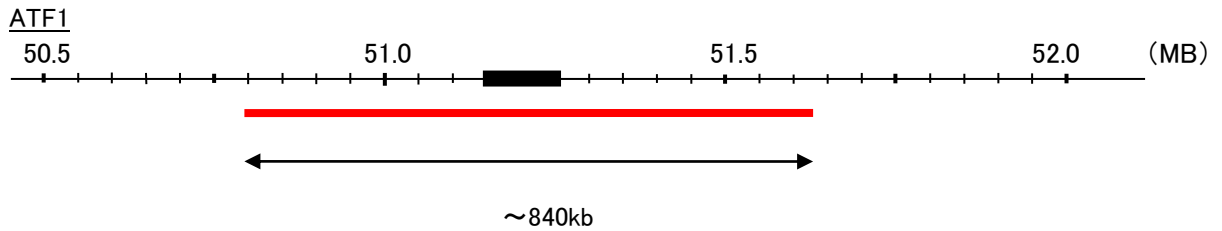
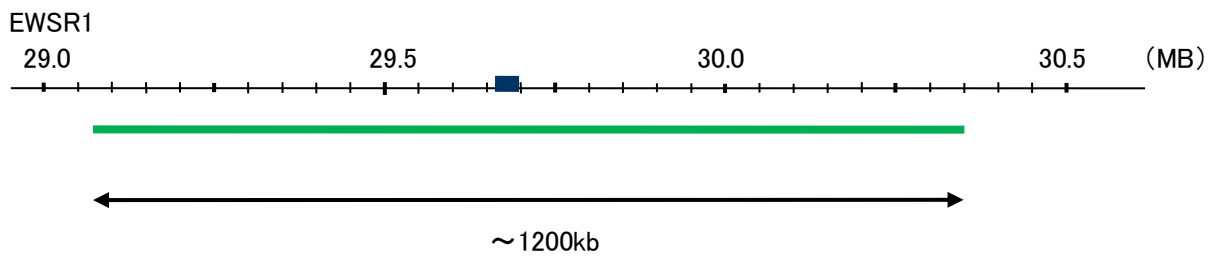


Probe EWSR1/ATF1,DY Translocation Dual Color FISH Probe  
Product No. TR026

EWSR1  
Probe Size Approximately 1200kb  
Fluorophore FITC  
Location 22q12  
Also known as EWS; EWS-FLI1; bK984G1.4

ATF1  
Probe Size Approximately 840kb  
Fluorophore TexRed  
Location 12q13.12  
Also known as TREB36; EWS-ATF1; FUS/ATF-1



Representative images of normal human cell (lymphocyte) stain with the dual color FISH probe. The left image is chromosomes at metaphase, and the right image is an interphase nucleus.