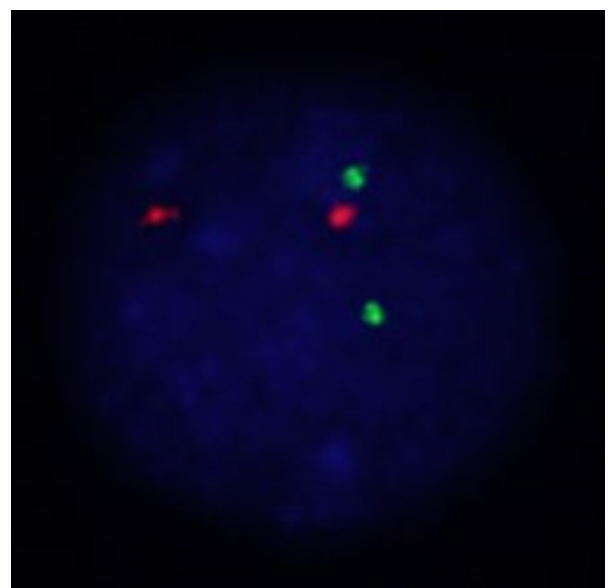
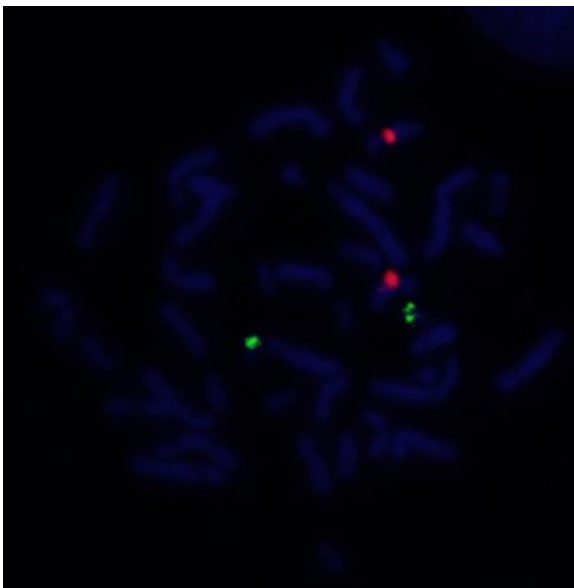
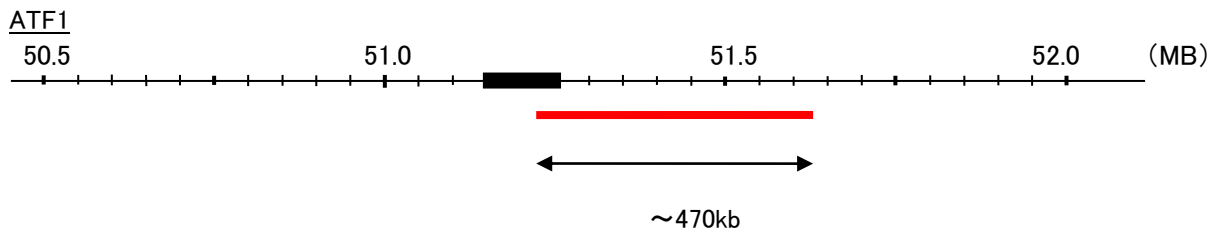
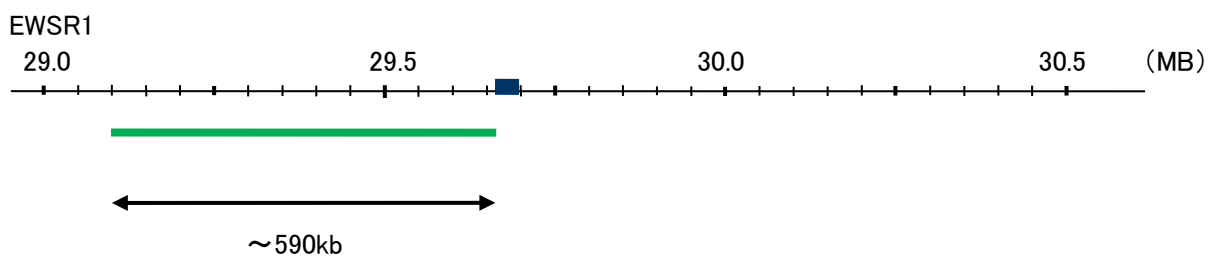


Probe EWSR1/ATF1, SY Translocation Dual Color FISH Probe
Product No. TR027

EWSR1
Probe Size Approximately 590kb
Fluorophore FITC
Location 22q12
Also known as EWS; EWS-FLI1; bK984G1.4

ATF1
Probe Size Approximately 470kb
Fluorophore TexRed
Location 12q13.12
Also known as TREB36; EWS-ATF1; FUS/ATF-1



Representative images of normal human cell (lymphocyte) stain with the dual color FISH probe. The left image is chromosomes at metaphase, and the right image is an interphase nucleus.