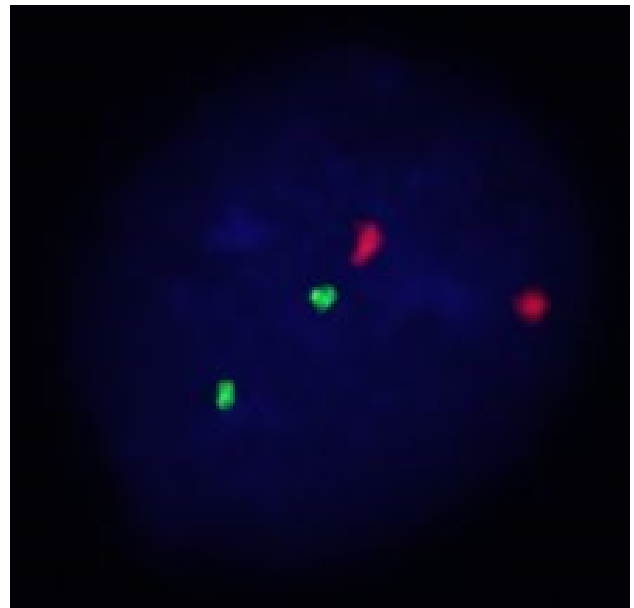
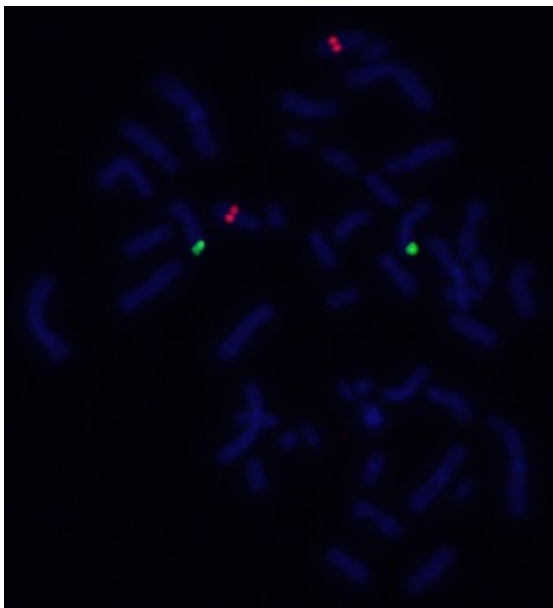
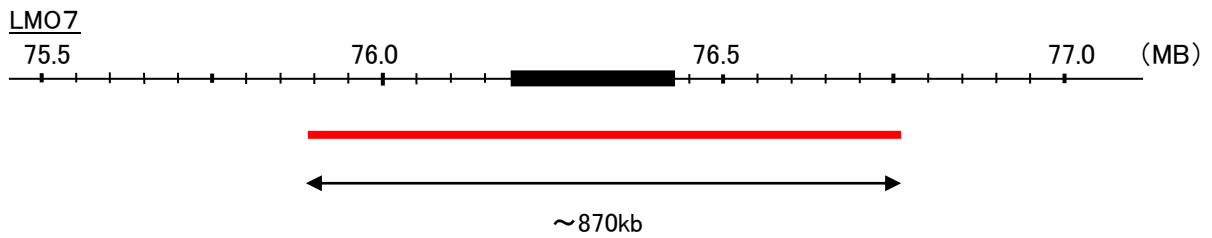
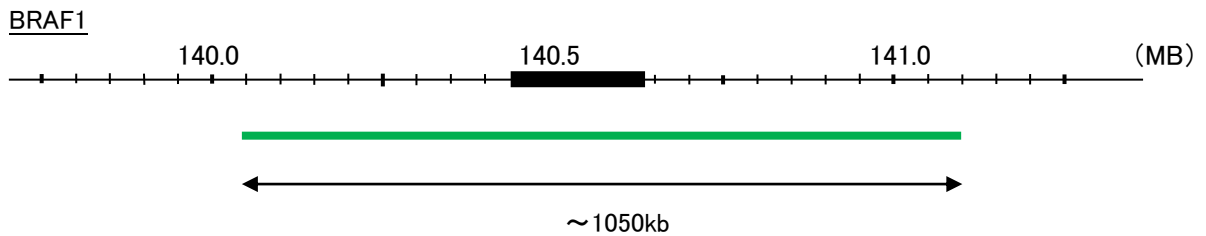


Probe BRAF1/LMO7, DY Translocation Dual Color FISH Probe  
Product No. TR028

**BRAF1**  
Probe Size Approximately 1050kb  
Fluorophore FITC  
Location 7q34  
Also known as NS7; B-raf; BRAF; RAFB1; B-RAF1

**LMO7**  
Probe Size Approximately 870kb  
Fluorophore TexRed  
Location 13q22.2  
Also known as LOMP; FBX20; FBXO20

Storage 4°C



Representative images of normal human cell (lymphocyte) stain with the dual color FISH probe. The left image is chromosomes at metaphase, and the right image is an interphase nucleus.