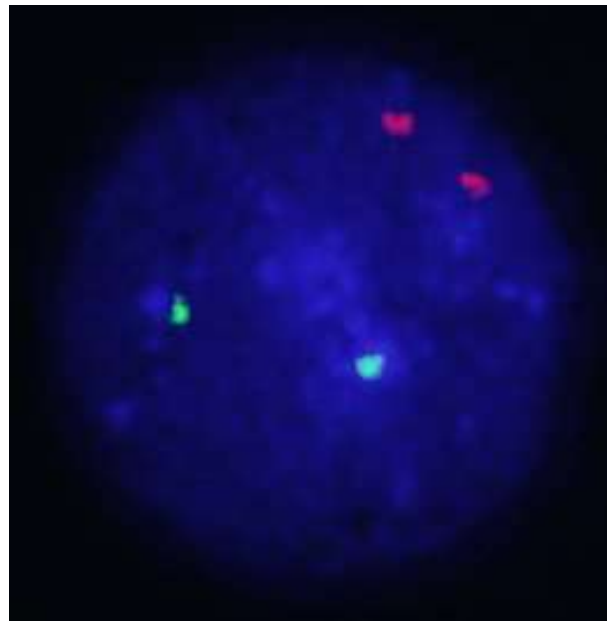
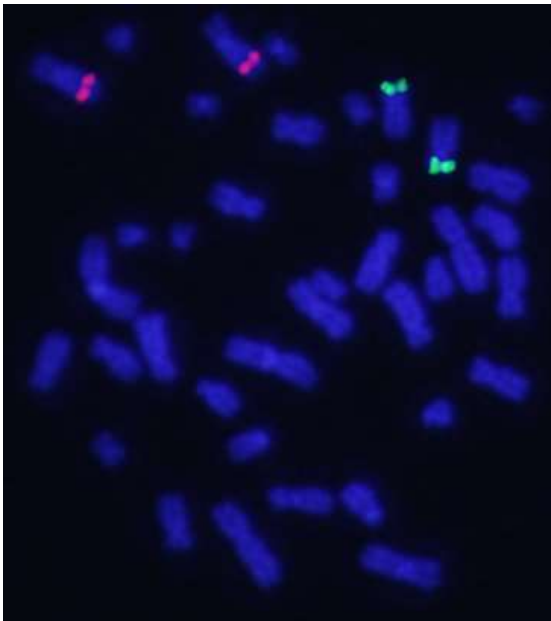
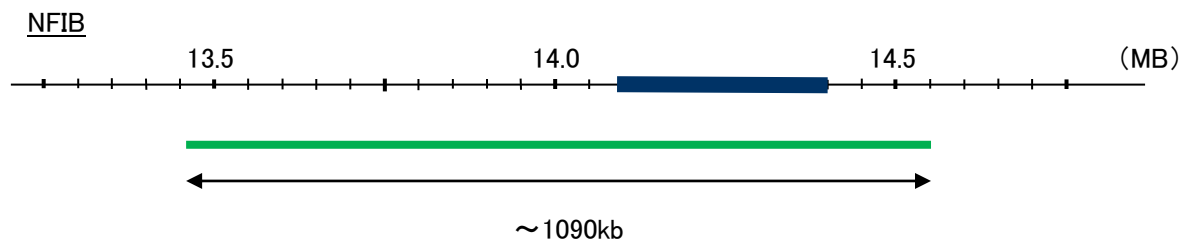
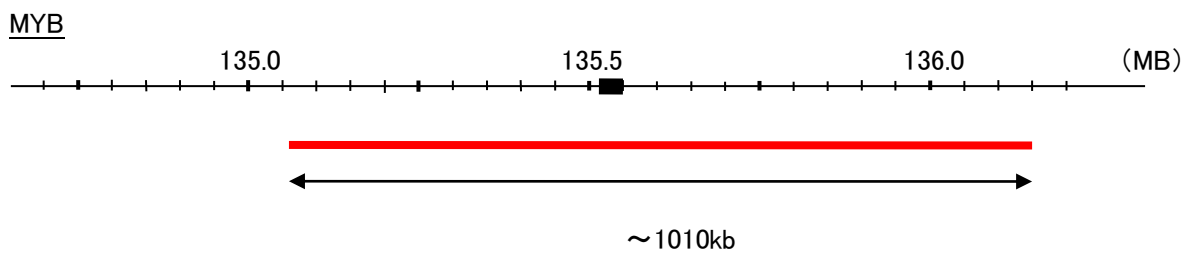


Probe MYB/NFIB, DY Translocation Dual Color FISH Probe  
Product No. TR031

**MYB**  
Probe Size Approximately 1010kb  
Fluorophore TexRed  
Location 6q22-23  
Also known as efg; Cmyb; c-myb; c-myb\_CDS

**NFIB**  
Probe Size Approximately 1090kb  
Fluorophore TexRed  
Location 9p24.1  
Also known as CTF; NF1-B; NFI-B; NFIB2; NFIB3; NF-I/B; NFI-RED; HMGIC/NFIB



Representative images of normal human cell (lymphocyte) stain with the dual color FISH probe. The left image is chromosomes at metaphase, and the right image is an interphase nucleus.