

Probe CSF1/CDH17, DY Translocation FISH Probe
Product No. TR034

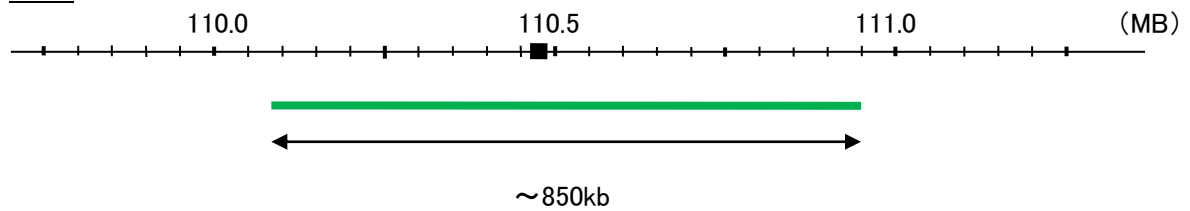
CSF1

Probe Size Approximately 850kb
Fluorophore FITC
Location 1p13.3
Also known as MCSF; CSF-1

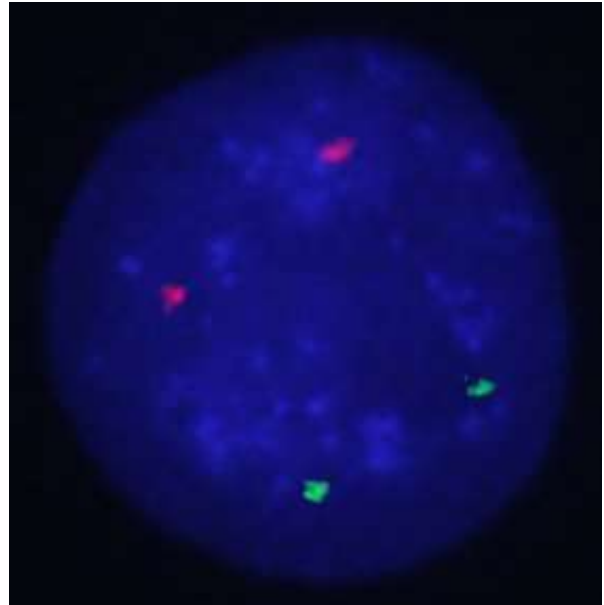
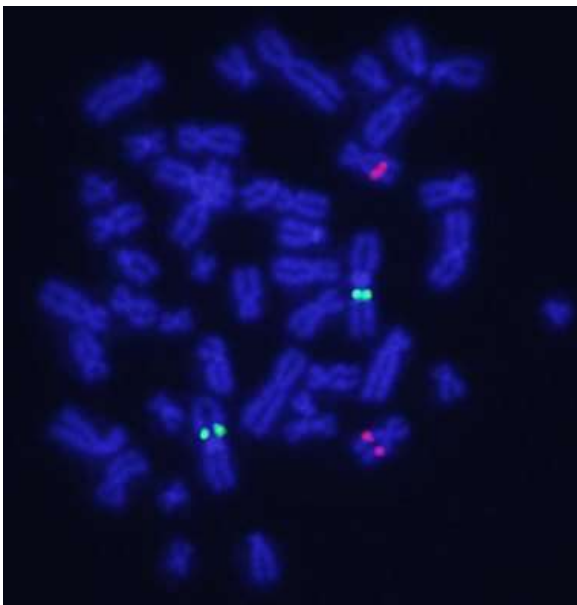
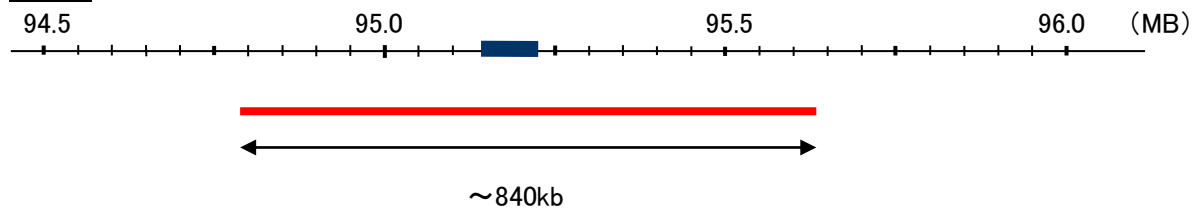
CDH17

Probe Size Approximately 840kb
Fluorophore TexRed
Location 8q22.1
Also known as HPT1; CDH16; HPT-1

CSF1



CDH17



Representative images of normal human cell (lymphocyte) stain with the dual color FISH probe. The left image is chromosomes at metaphase, and the right image is an interphase nucleus.