

Probe CSF1/FN1, DY Translocation FISH Probe  
Product No. TR036

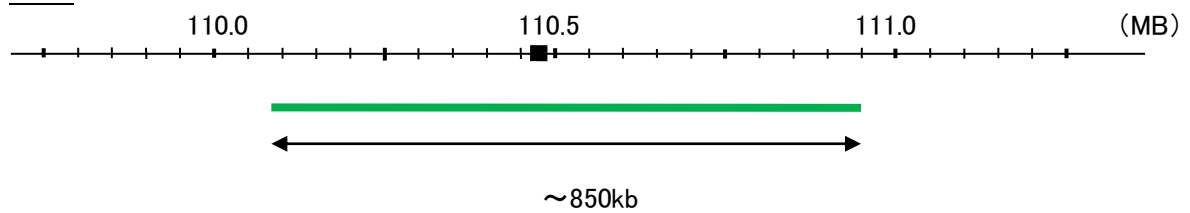
**CSF1**

Probe Size Approximately 850kb  
Fluorophore FITC  
Location 1p13.3  
Also known as MCSF; CSF-1

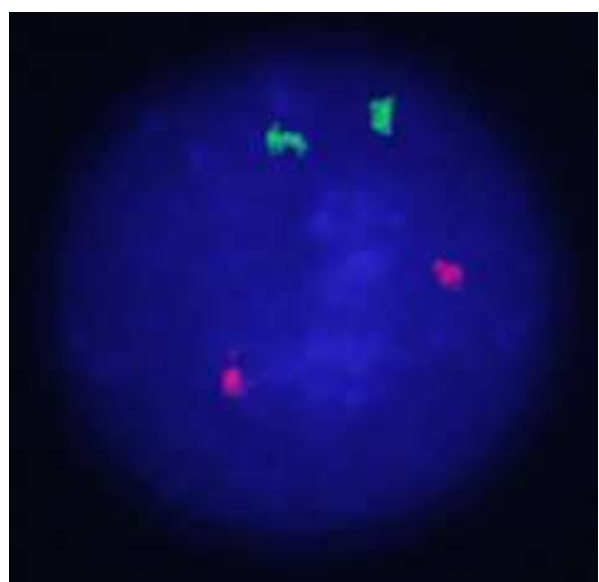
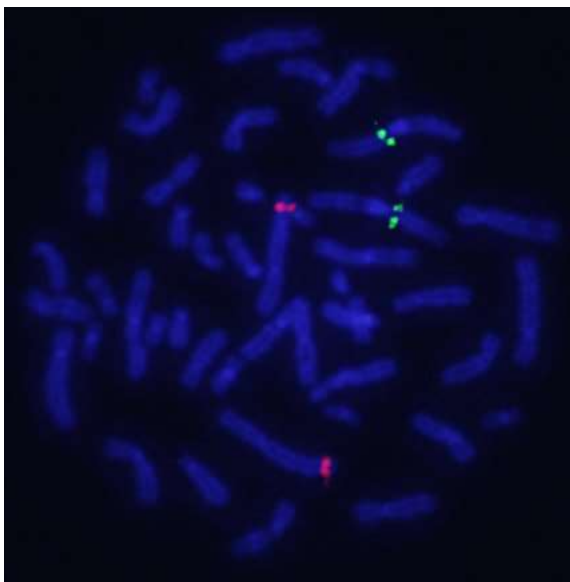
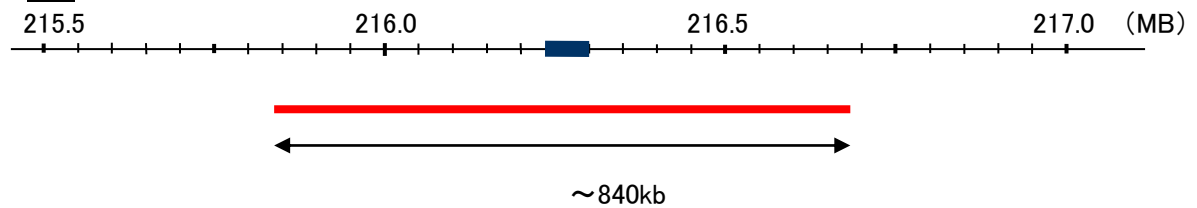
**FN1**

Probe Size Approximately 840kb  
Fluorophore TexRed  
Location 2q35  
Also known as FN; CIG; FNZ; MSF; ED-B; FINC; GFND; LETS; GFND2; SMDCF

CSF1



FN1



Representative images of normal human cell (lymphocyte) stain with the dual color FISH probe. The left image is chromosomes at metaphase, and the right image is an interphase nucleus.