

Probe CSF1/FN1, SY Translocation FISH Probe
Product No. TR037

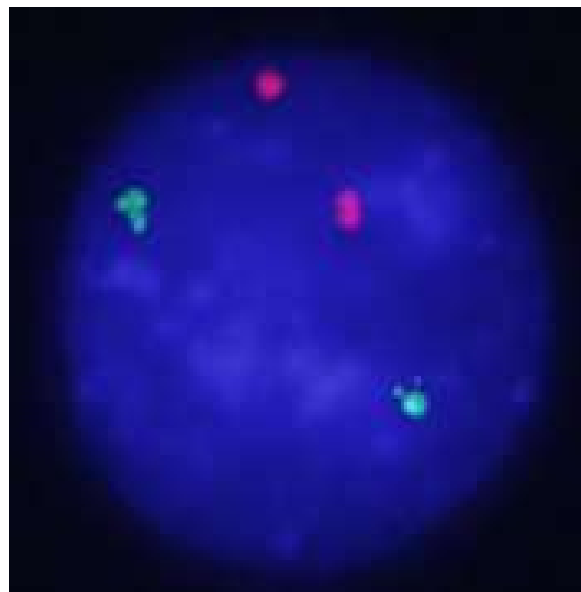
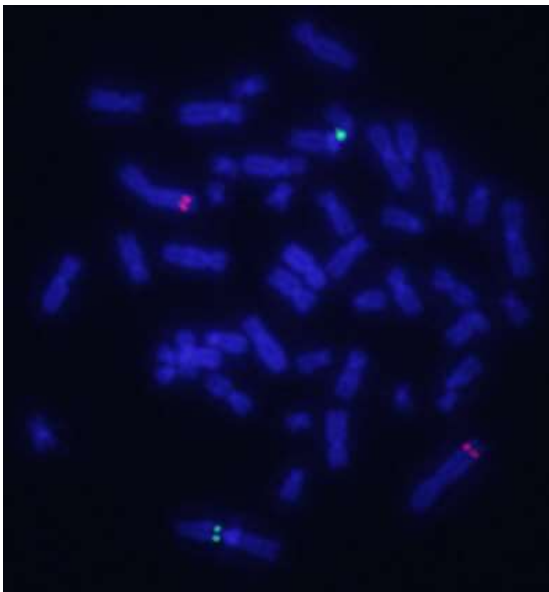
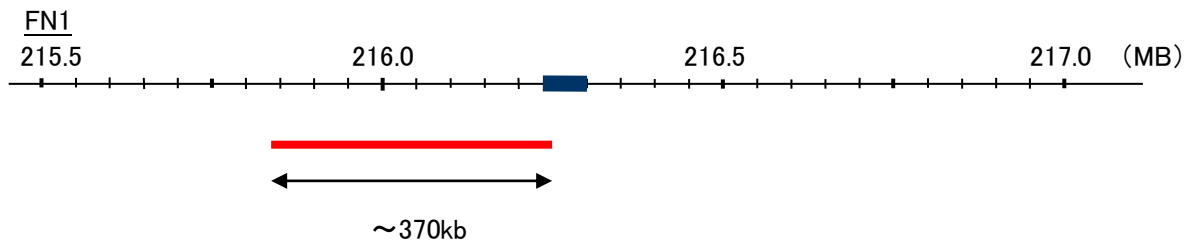
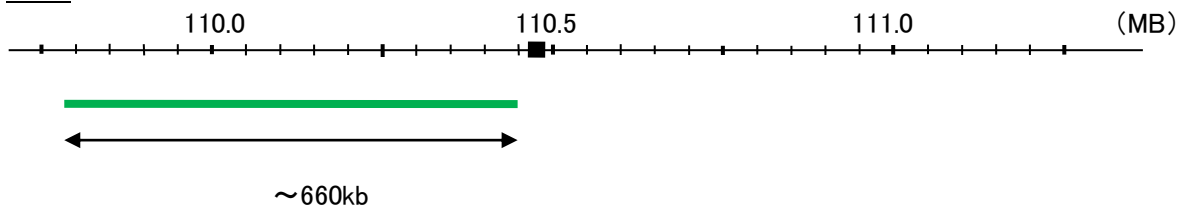
CSF1

Probe Size Approximately 660kb
Fluorophore FITC
Location 1p13.3
Also known as MCSF; CSF-1

FN1

Probe Size Approximately 370kb
Fluorophore TexRed
Location 2q35
Also known as FN; CIG; FNZ; MSF; ED-B; FINC; GFND; LETS; GFND2; SMDCF

CSF1



Representative images of normal human cell (lymphocyte) stain with the dual color FISH probe. The left image is chromosomes at metaphase, and the right image is an interphase nucleus.