

Probe CSF1/NOTCH2, SY(V.2) Translocation FISH Probe
Product No. TR041

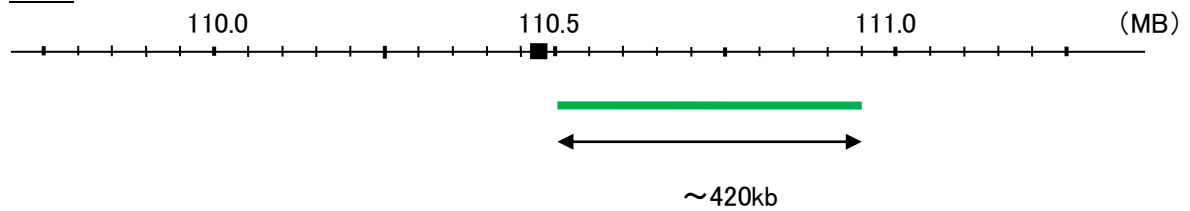
CSF1

Probe Size Approximately 420kb
Fluorophore FITC
Location 1p13.3
Also known as MCSF; CSF-1

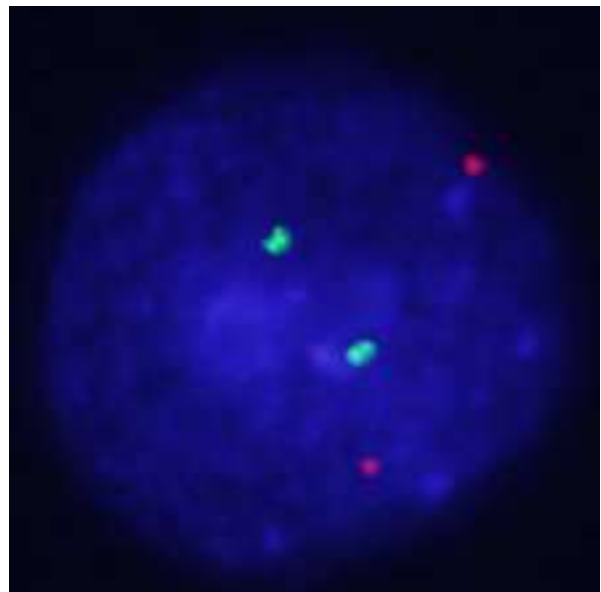
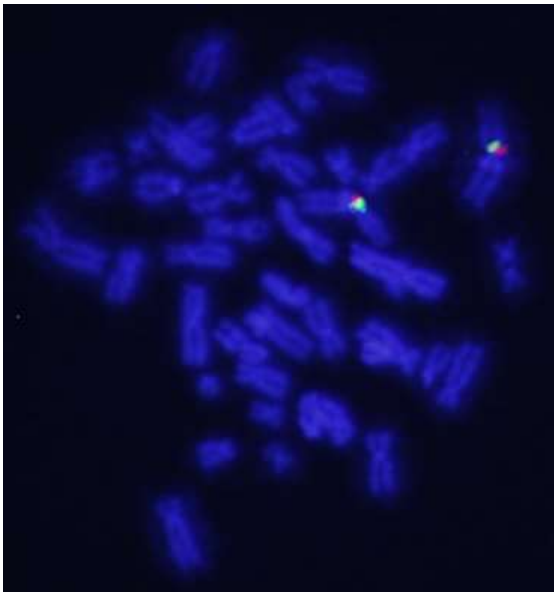
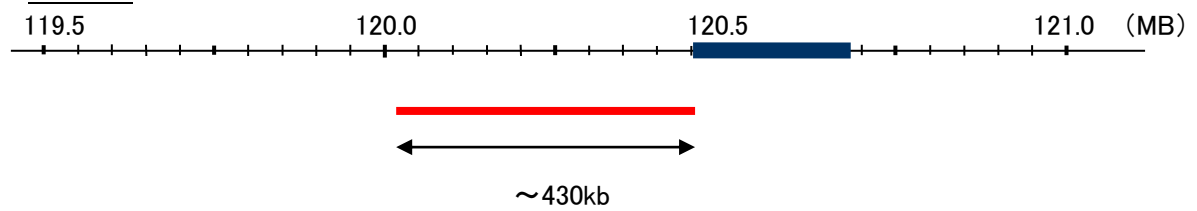
NOTCH2

Probe Size Approximately 430kb
Fluorophore TexRed
Location 1p12
Also known as hN2; AGS2; HJCYS

CSF1



NOTCH2



Representative images of normal human cell (lymphocyte) stain with the dual color FISH probe. The left image is chromosomes at metaphase, and the right image is an interphase nucleus.