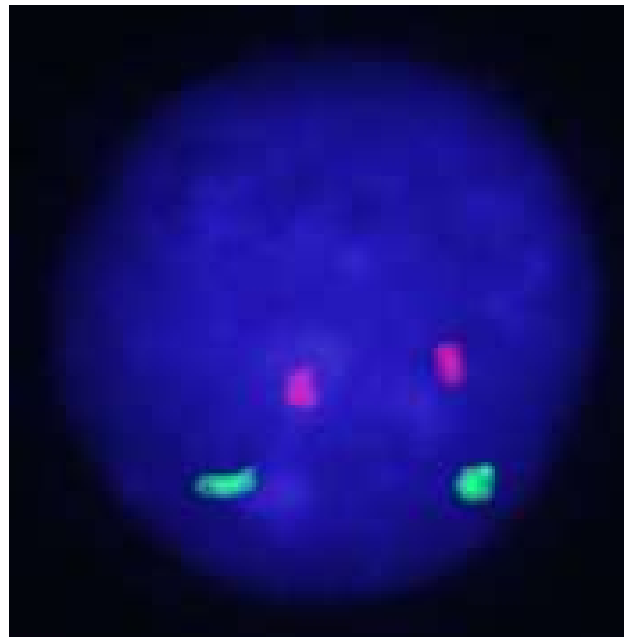
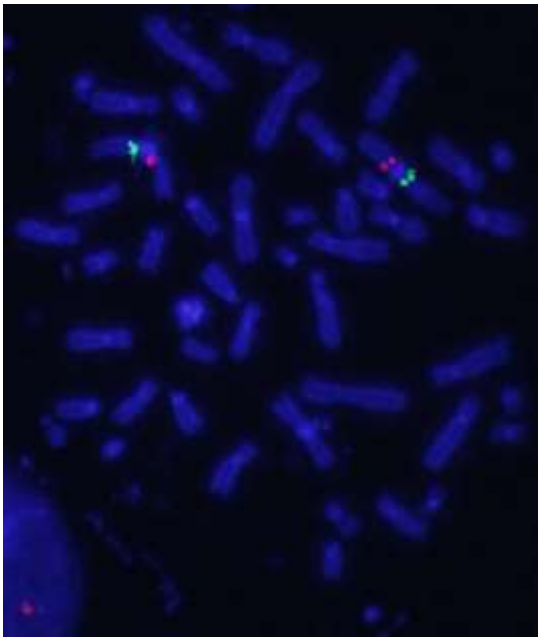
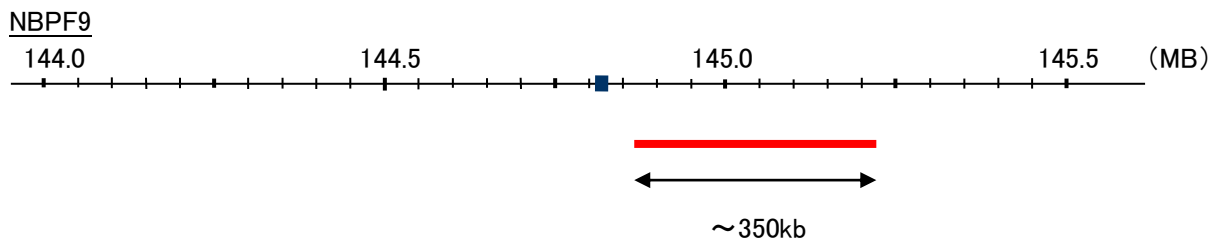
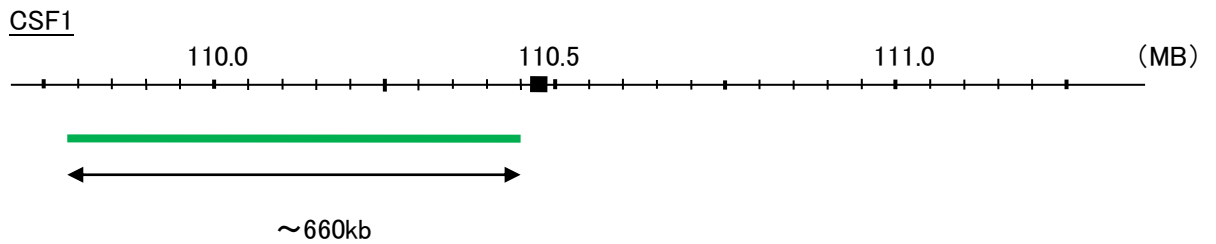


Probe CSF1/NBPF9, SY Translocation FISH Probe
Product No. TR042

CSF1
Probe Size Approximately 660kb
Fluorophore FITC
Location 1p13.3
Also known as MCSF; CSF-1

NBPF9
Probe Size Approximately 350kb
Fluorophore TexRed
Location 1q21.2
Also known as AE01



Representative images of normal human cell (lymphocyte) stain with the dual color FISH probe. The left image is chromosomes at metaphase, and the right image is an interphase nucleus.