

Probe NUT/BRD4, SY Translocation FISH Probe  
Product No. TR044

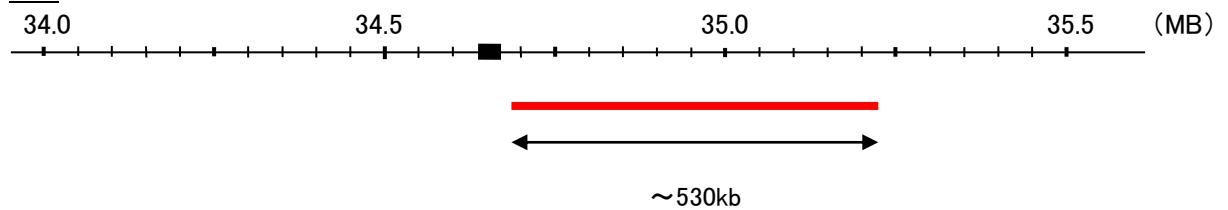
**NUT**

Probe Size Approximately 530 kb  
Fluorophore TexRed  
Location 15q14  
Also known as NUTM1; FAM22H; C15orf55

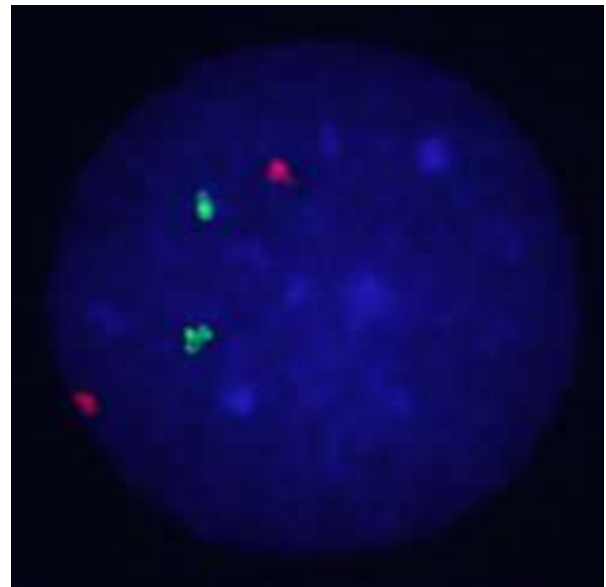
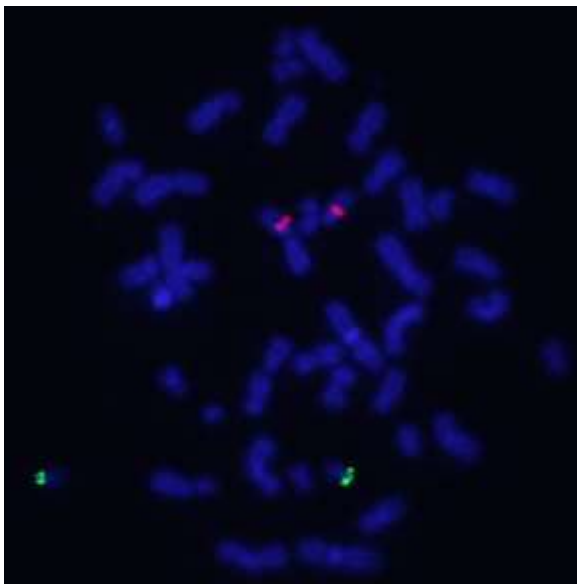
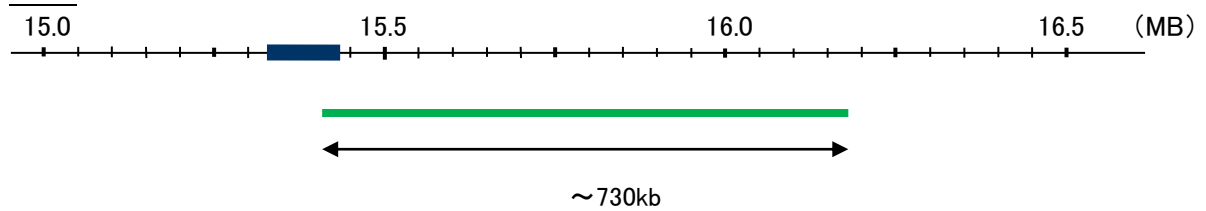
**BRD4**

Probe Size Approximately 730 kb  
Fluorophore FITC  
Location 19p13.1  
Also known as CAP; MCAP; HUNK1; HUNKI

NUT



BRD4



Representative images of normal human cell (lymphocyte) stain with the dual color FISH probe. The left image is chromosomes at metaphase, and the right image is an interphase nucleus.