

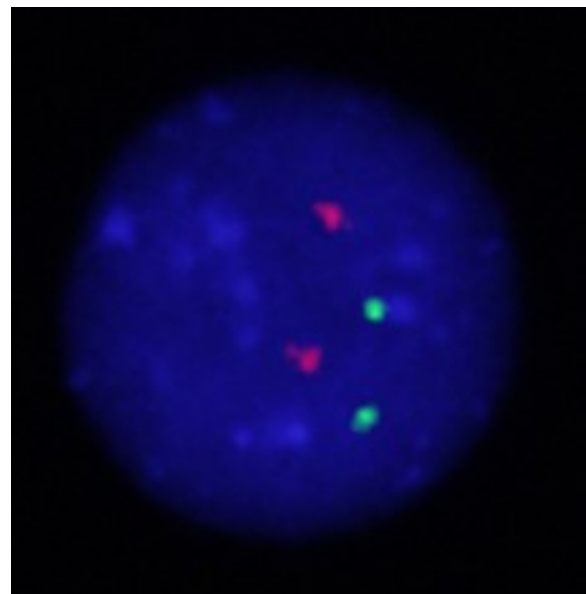
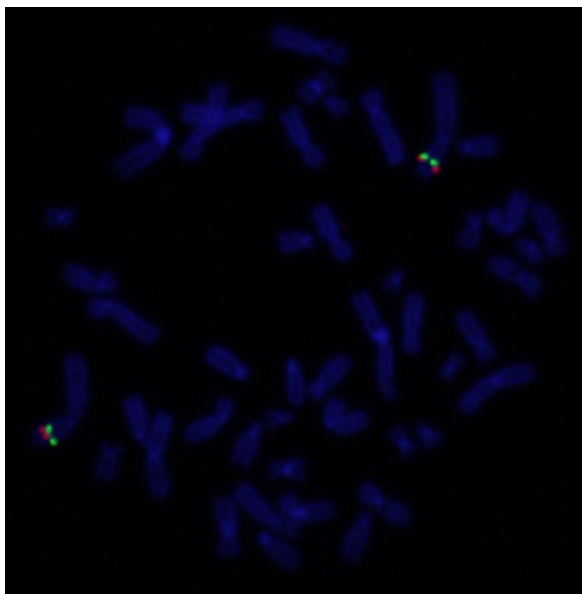
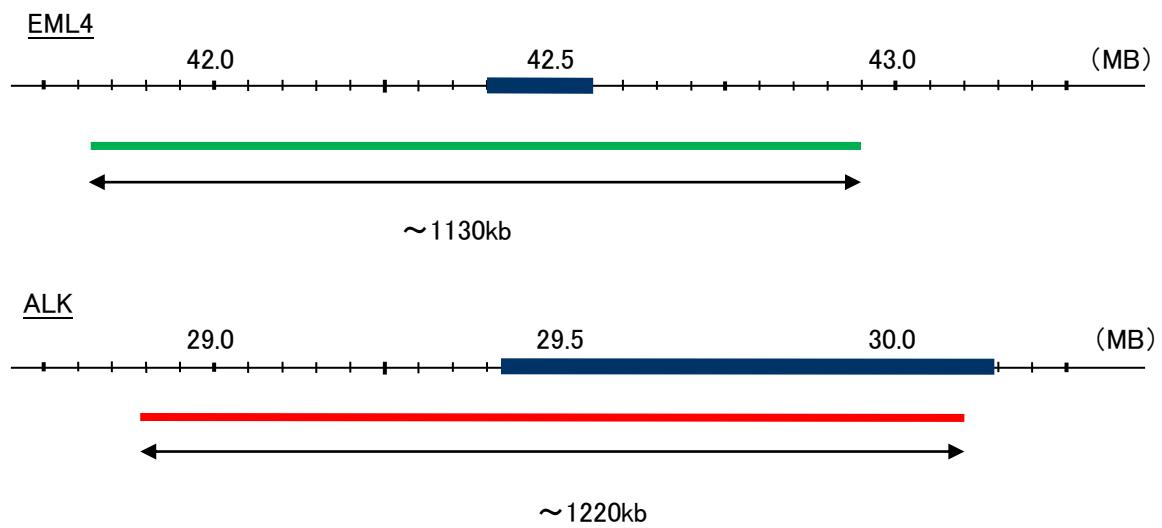
Probe EML4/ALK, DY Translocation Dual Color FISH Probe  
Product No. TR001

EML4

Probe Size Approximately 1130kb  
Fluorophore FITC  
Location 2p22-p21  
Also known as G2orf2; ELP120; EMAP-4; EMAPL4; ROPP120

ALK

Probe Size Approximately 1220kb  
Fluorophore TexRed  
Location 2p23  
Also known as CD246; NBLST3



Representative images of normal human cell (lymphocyte) stain with the dual color FISH probe. The left image is chromosomes at metaphase, and the right image is an interphase nucleus.