

Probe NCOA2/HEY1, DY Translocation Dual Color FISH Probe  
Product No. TR008

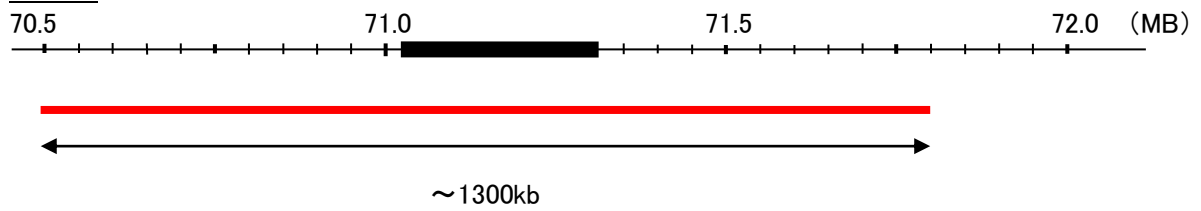
NCOA2

Probe Size Approximately 1300kb  
Fluorophore TexRed  
Location 8q13.3  
Also known as SRC2; TIF2; GRIP1; KAT13C; NCoA-2; bHLHe75

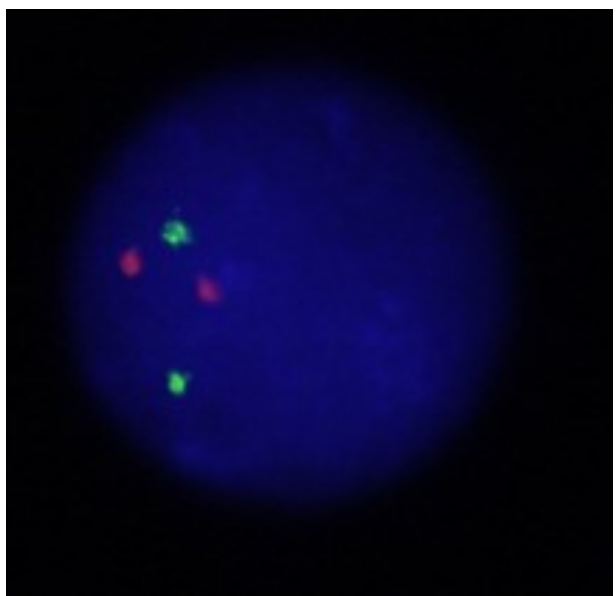
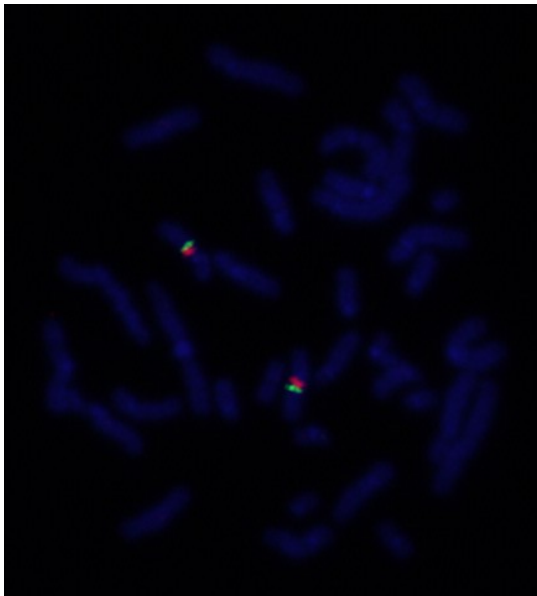
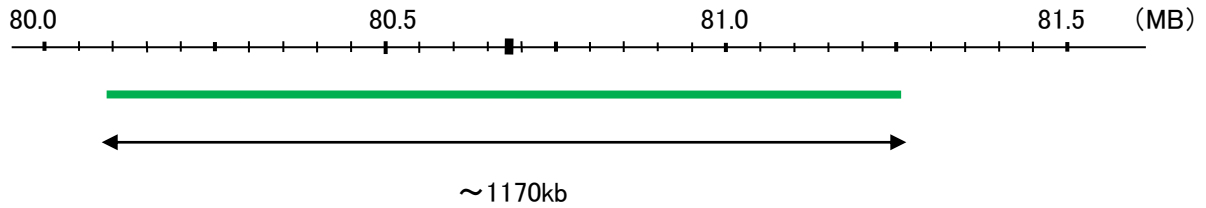
HEY1

Probe Size Approximately 1170kb  
Fluorophore FITC  
Location 8q21.13  
Also known as CHF2; OAF1; HERP2; HESR1; HRT-1; hHRT1; BHLHb31

NCOA2



HEY1



Representative images of normal human cell (lymphocyte) stain with the dual color FISH probe. The left image is chromosomes at metaphase, and the right image is an interphase nucleus.