

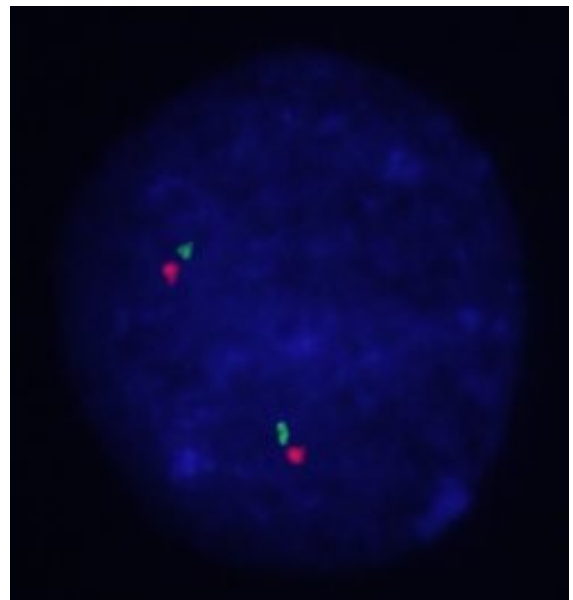
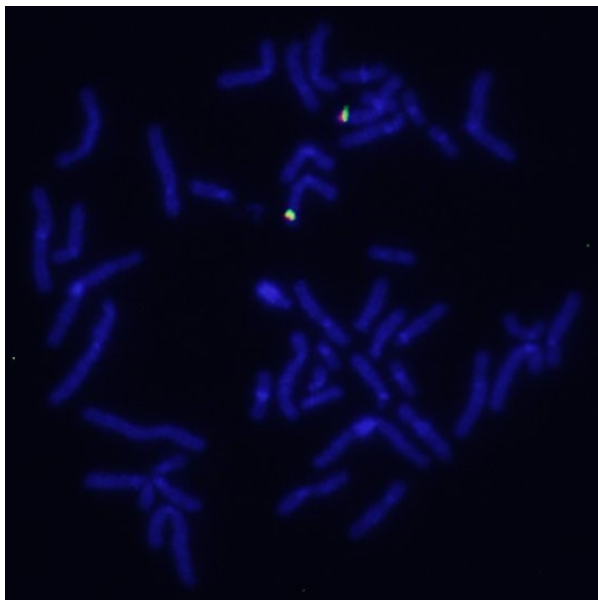
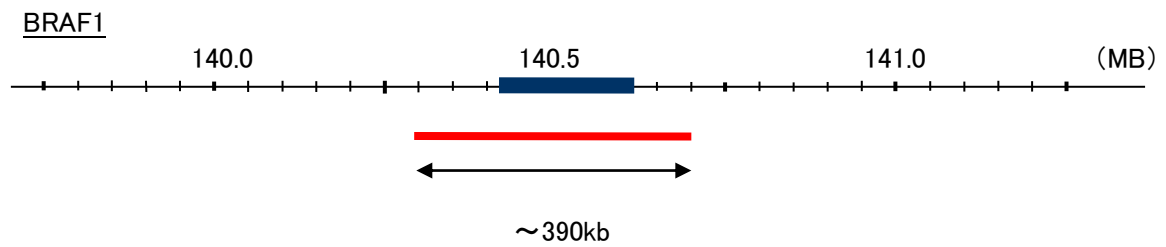
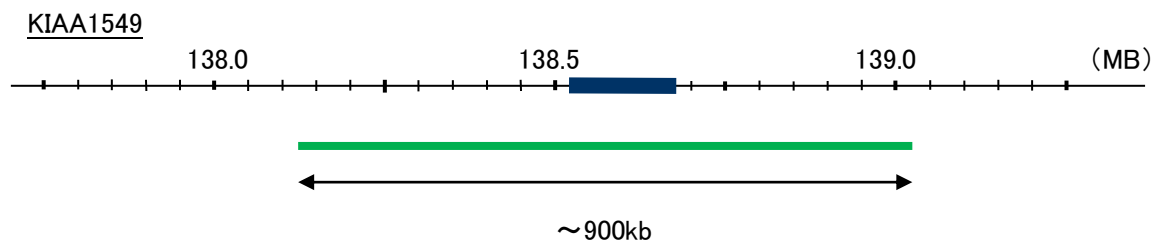
Probe KIAA1549/BRAF1, DY Translocation Dual Color FISH Probe  
Product No. TR015

KIAA1549

Probe Size Approximately 900kb  
Fluorophore FITC  
Location 7q34

BRAF1

Probe Size Approximately 390kb  
Fluorophore TexRed  
Location 7q34  
Also known as NS7; BRAF1; RAFB1; B-RAF1



Representative images of normal human cell (lymphocyte) stain with the dual color FISH probe. The left image is chromosomes at metaphase, and the right image is an interphase nucleus.