

Probe KIF5B/RET, DY Translocation Dual Color FISH Probe
Product No. TR010

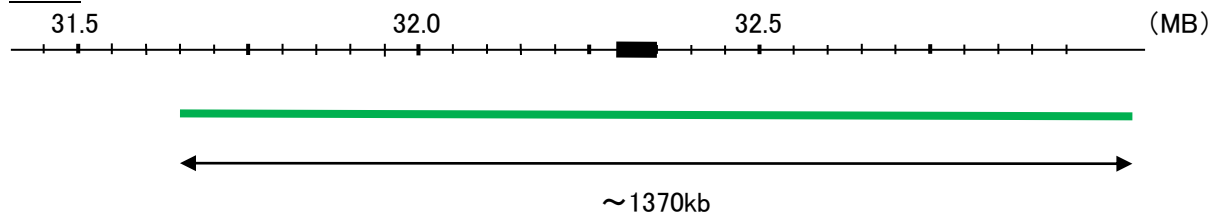
KIF5B

Probe Size Approximately 1370kb
Fluorophore FITC
Location 10p11.2
Also known as asKNS; KINH; KNS1; UKHC; HEL-S-61

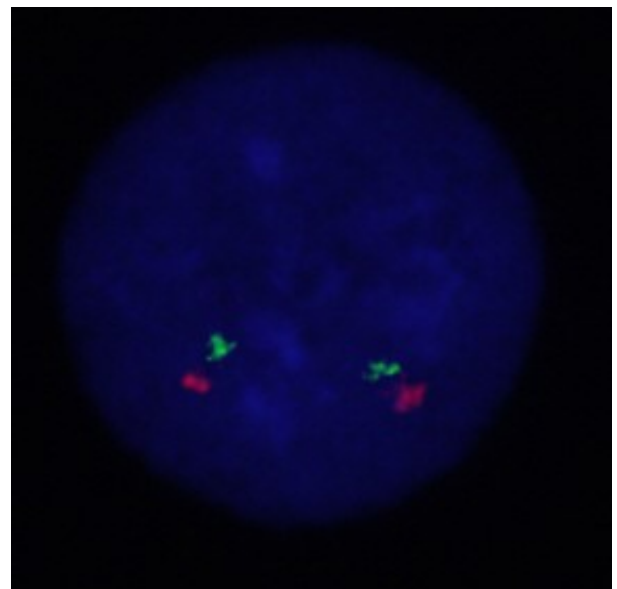
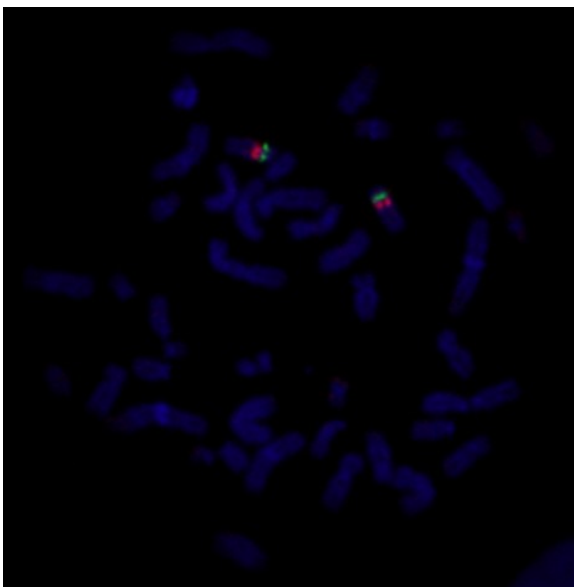
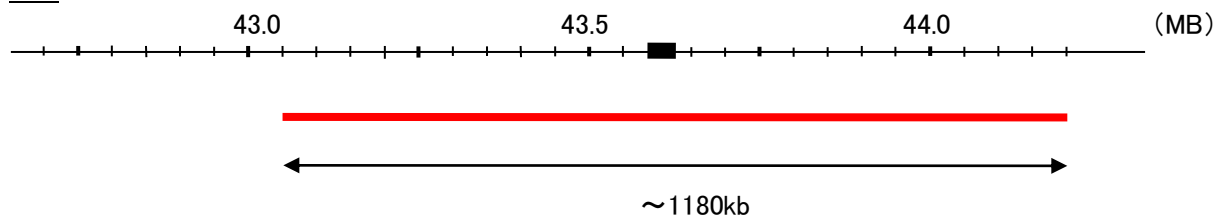
RET

Probe Size Approximately 1180kb
Fluorophore TexRed
Location 10q11.2
Also known as PTC; MTC1; HSCR1; MEN2A; MEN2B; RET51; CDHF12; CDHR16; RET-ELE1

KIF5B



RET



Representative images of normal human cell (lymphocyte) stain with the dual color FISH probe. The left image is chromosomes at metaphase, and the right image is an interphase nucleus.