

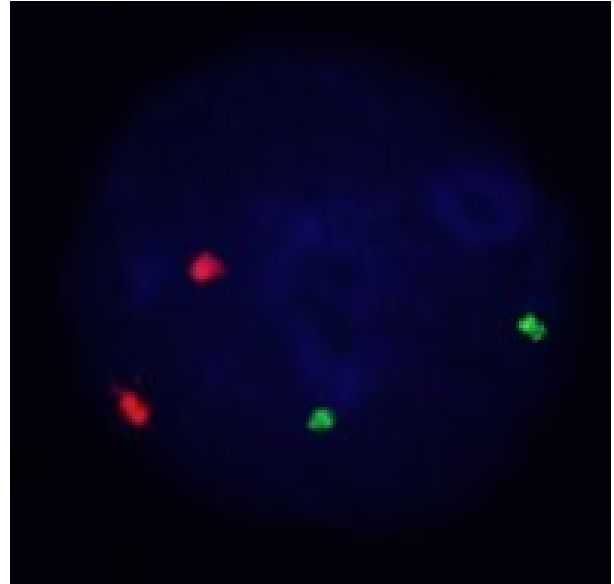
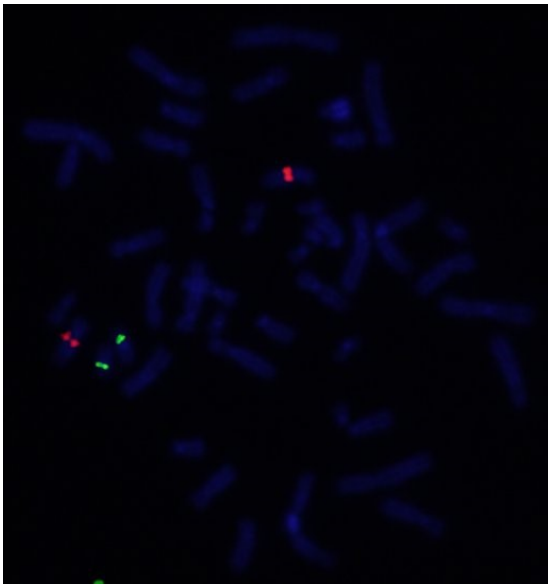
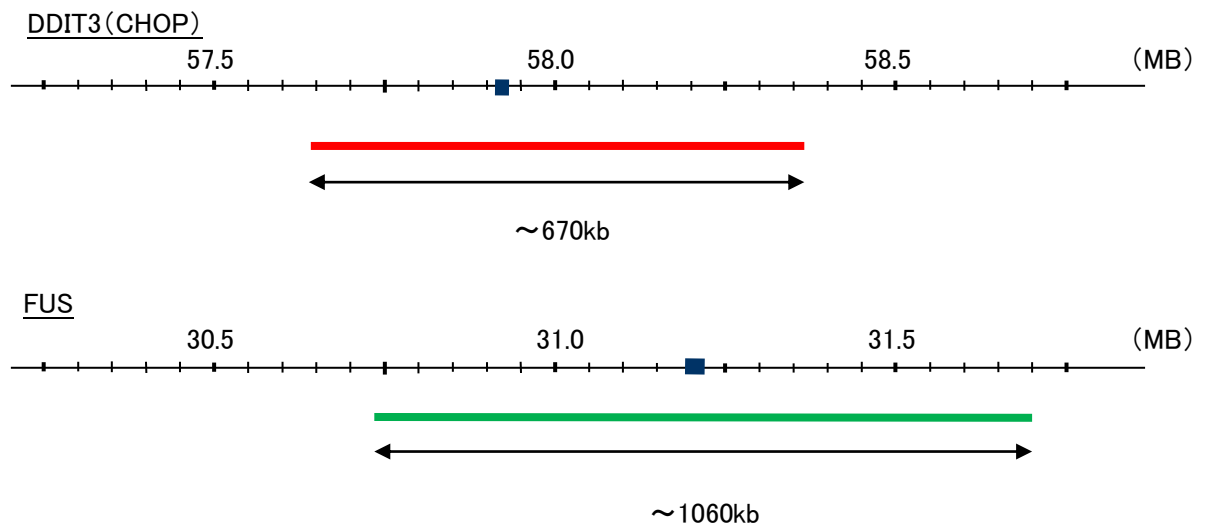
Probe DDIT3(CHOP)/FUS, DY Translocation Dual Color FISH Probe
Product No. TR019

DDIT3(CHOP)

Probe Size Approximately 670kb
Fluorophore TexRed
Location 12q13.1-13.2
Also known as CHOP; CEBPZ; CHOP10; CHOP-10; GADD153

FUS

Probe Size Approximately 1060kb
Fluorophore FITC
Location 16p11.2
Also known as TLS; ALS6; ETM4; FUS1; POMP75; HNRNPP2



Representative images of normal human cell (lymphocyte) stain with the dual color FISH probe. The left image is chromosomes at metaphase, and the right image is an interphase nucleus.