

Probe VCL/ALK, DY Translocation Dual Color FISH Probe  
Product No. TR021

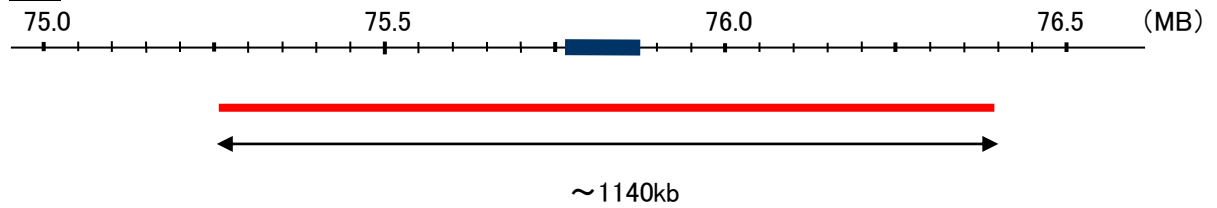
VCL

Probe Size Approximately 1140kb  
Fluorophore TexRed  
Location 10q22.2  
Also known as MV; MVCL; CMD1W; CMH15; HEL114

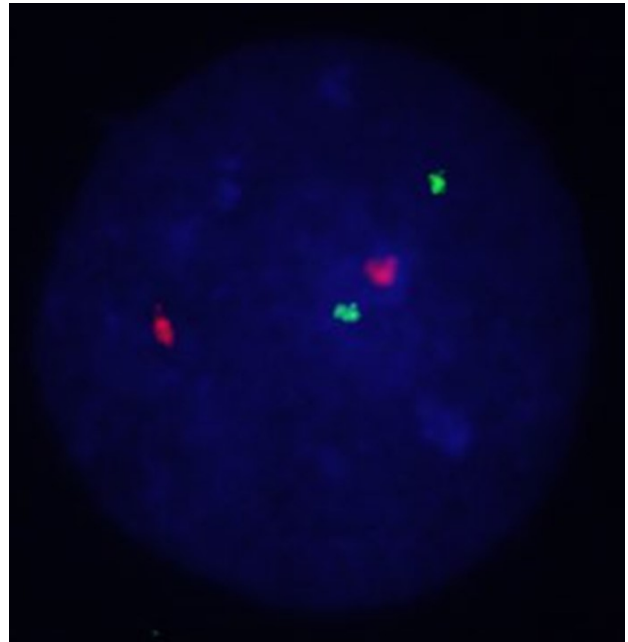
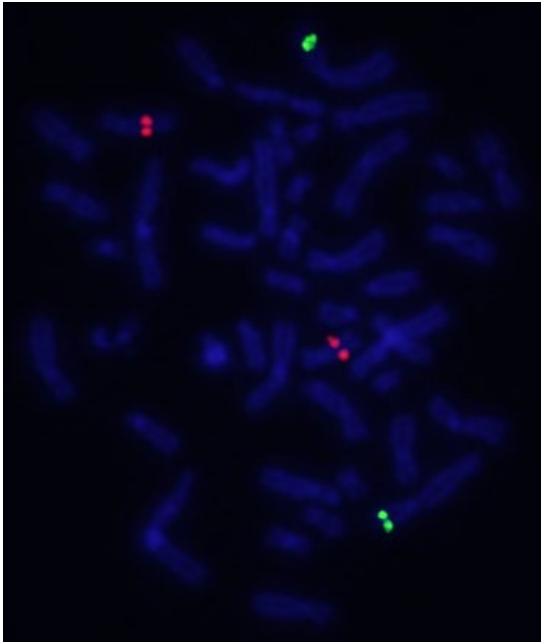
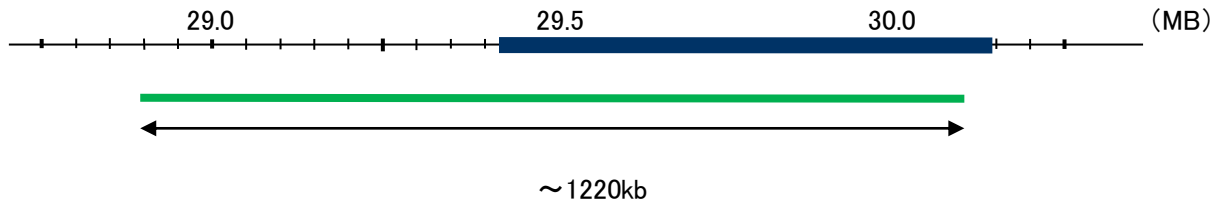
ALK

Probe Size Approximately 1220kb  
Fluorophore FITC  
Location 2p23  
Also known as CD246; NBLST3

VCL



ALK



Representative images of normal human cell (lymphocyte) stain with the dual color FISH probe. The left image is chromosomes at metaphase, and the right image is an interphase nucleus.