

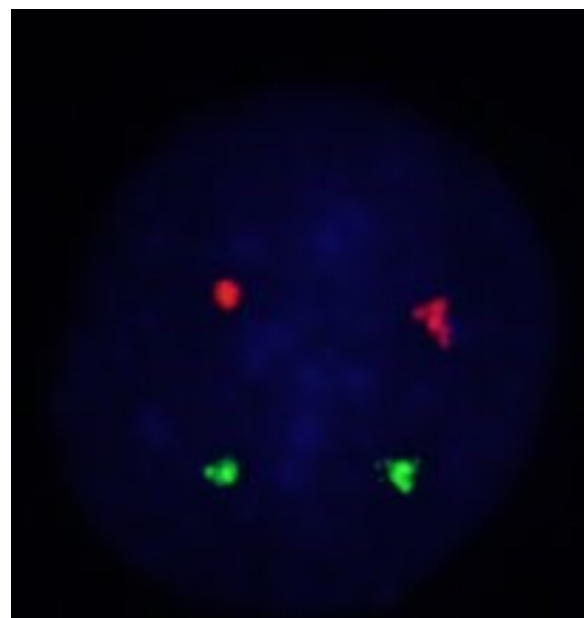
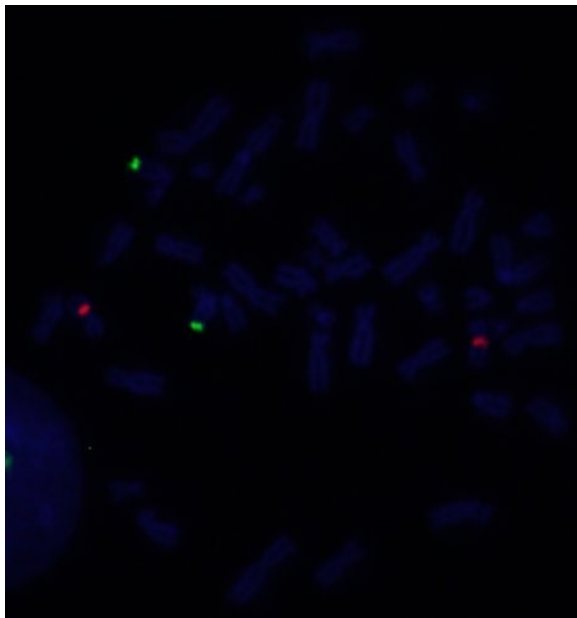
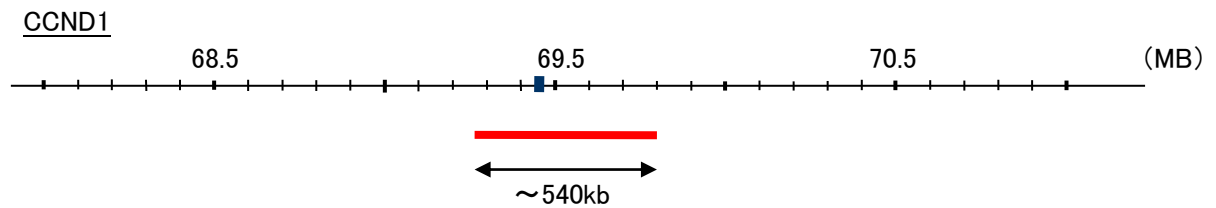
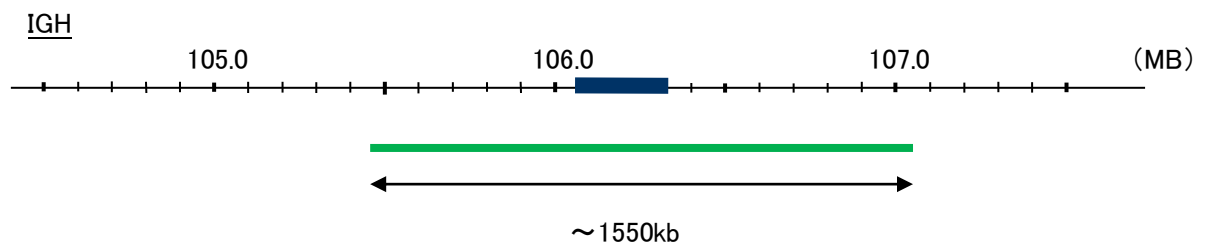
Probe IGH/CCND1, DY Translocation Dual Color FISH Probe  
Product No. TR024

**IGH**

Probe Size Approximately 1550kb  
Fluorophore FITC  
Location 14q32  
Also known as IGD1; IGH@; IGHJ; IGHV; IGHD@; IGHJ@; IGHV@; IGH.1@; IGHDY1

**CCND1**

Probe Size Approximately 540kb  
Fluorophore TexRed  
Location 11q13  
Also known as BCL1; PRAD1; U21B31; D11S287E



Representative images of normal human cell (lymphocyte) stain with the dual color FISH probe. The left image is chromosomes at metaphase, and the right image is an interphase nucleus.