

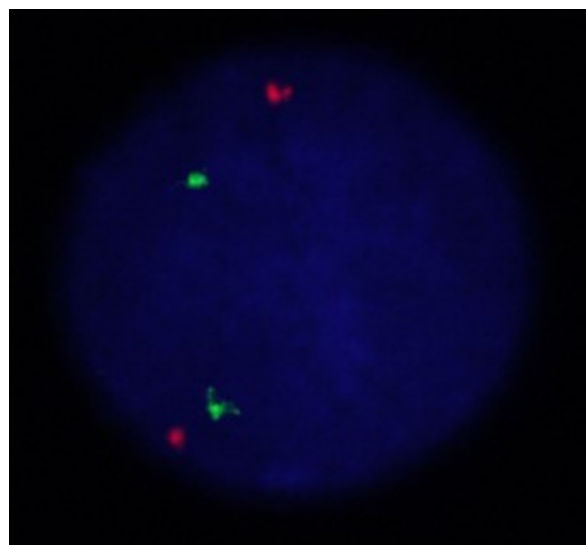
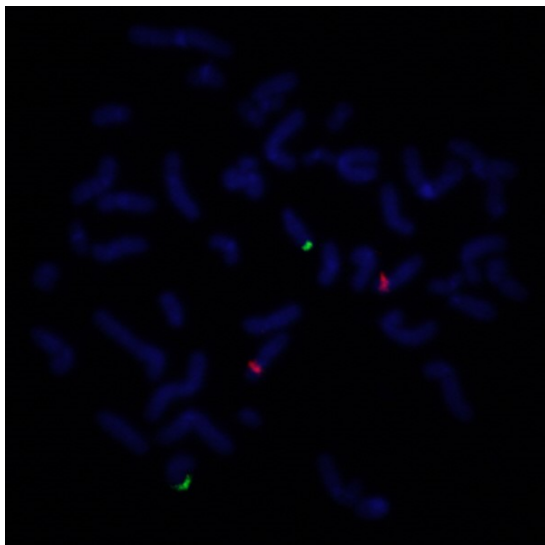
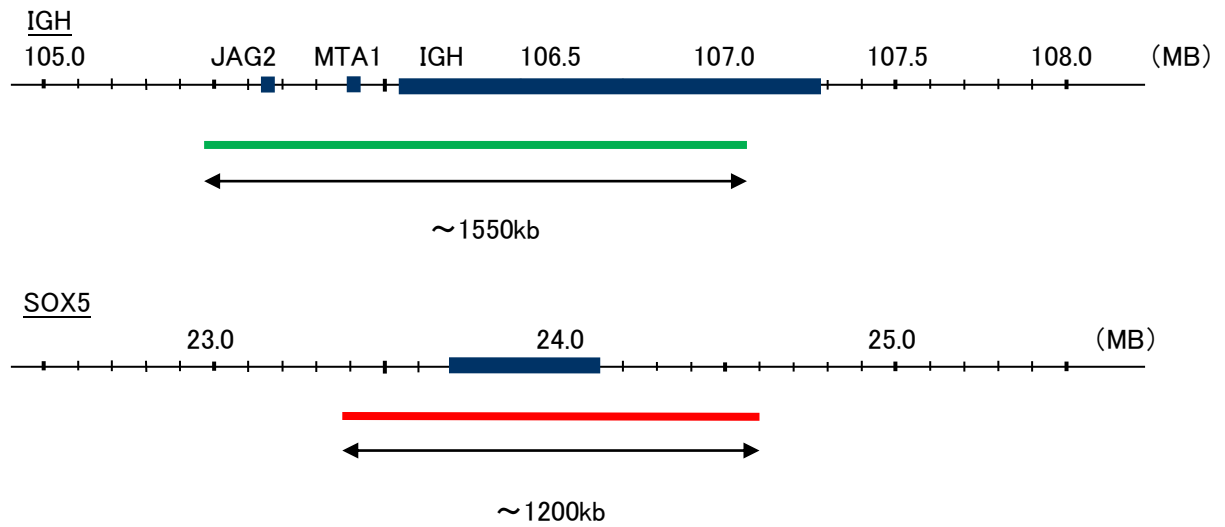
Probe IGH/SOX5, DY Translocation Dual Color FISH Probe
Product No. TR012

IGH

Probe Size Approximately 1550kb
Fluorophore FITC
Location 14q32
Also known as IGD1; IGH@; IGHJ; IGHV; IGHD@; IGHJ@; IGHV@; IGH.1@; IGHDY1

SOX5

Probe Size Approximately 1200kb
Fluorophore TexRed
Location 12p12.2
Also known as L-SOX5; L-SOX5B; L-SOX5F



Representative images of normal human cell (lymphocyte) stain with the dual color FISH probe. The left image is chromosomes at metaphase, and the right image is an interphase nucleus.