

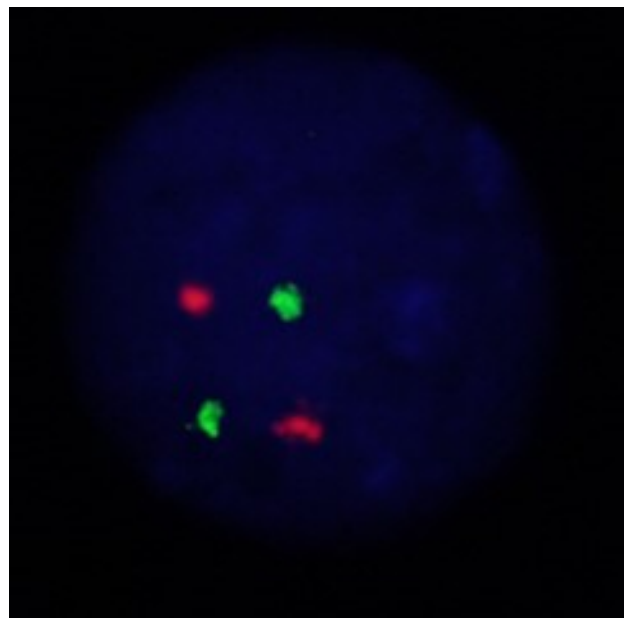
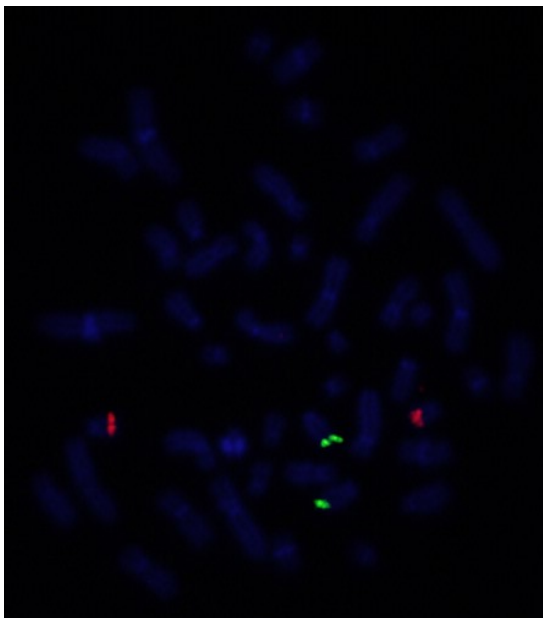
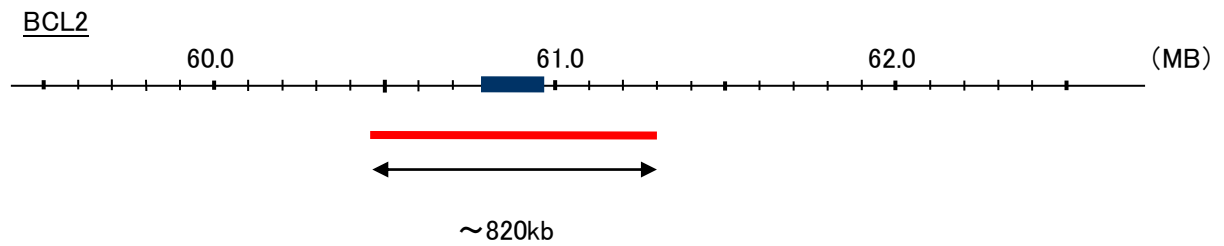
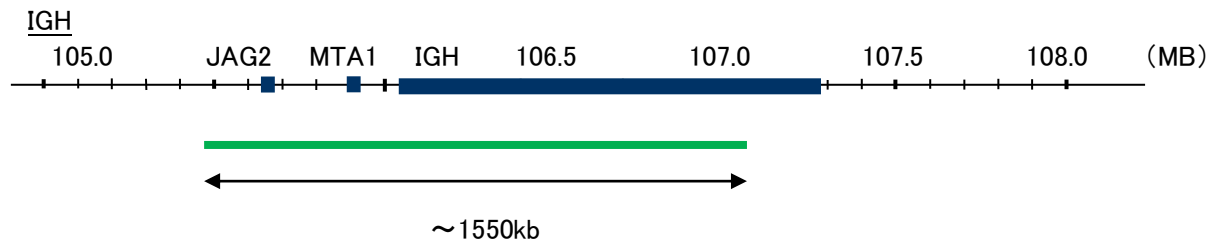
Probe IGH/BCL2, DY Translocation Dual Color FISH Probe
Product No. TR013

IGH

Probe Size Approximately 1550kb
Fluorophore FITC
Location 14q32
Also known as IGD1; IGH@; IGHJ; IGHV; IGHD@; IGHJ@; IGHV@; IGH.1@; IGHDY1

BCL2

Probe Size Approximately 820kb
Fluorophore TexRed
Location 18q21
Also known as Bcl-2; PPP1R50



Representative images of normal human cell (lymphocyte) stain with the dual color FISH probe. The left image is chromosomes at metaphase, and the right image is an interphase nucleus.