

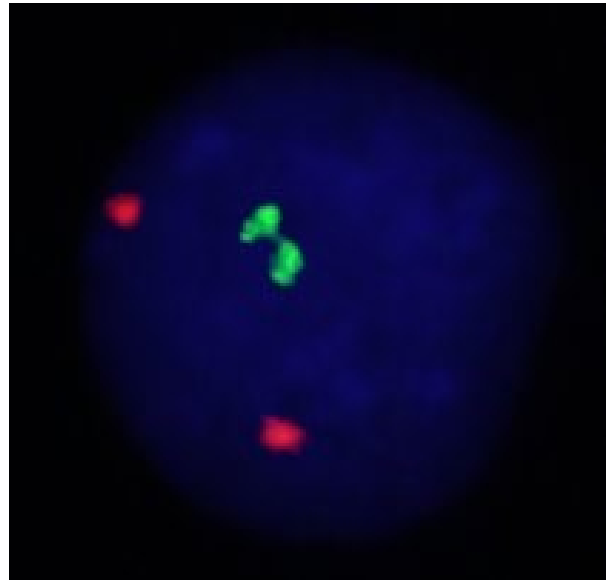
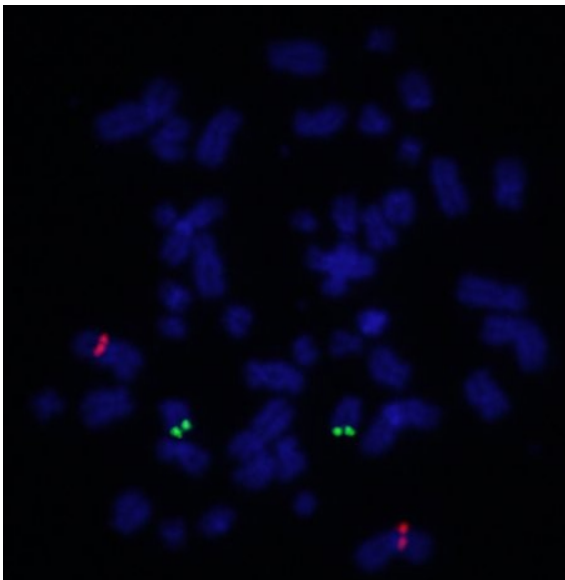
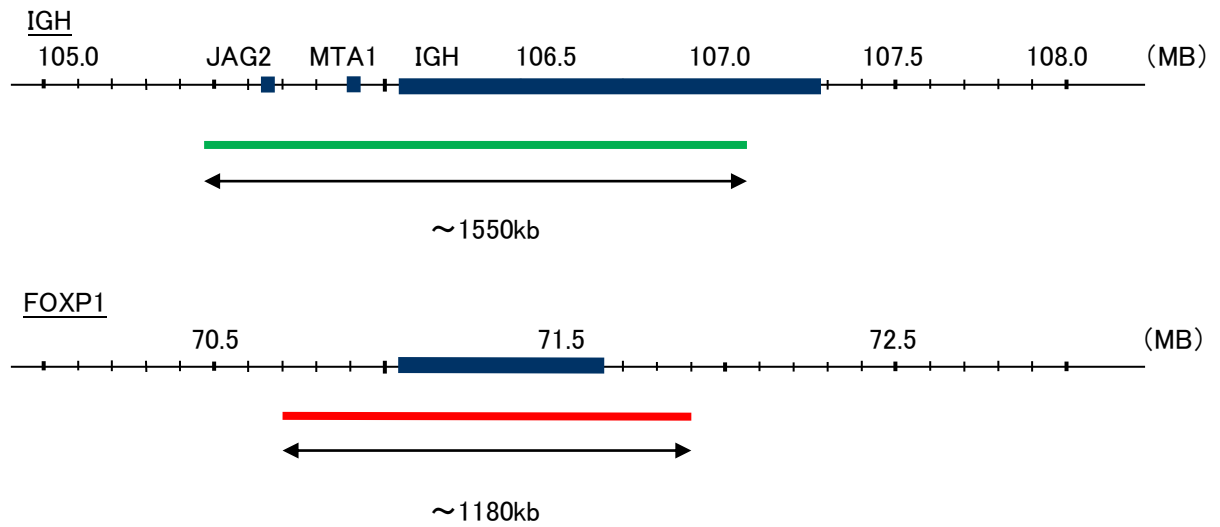
Probe IGH/FOXP1, DY Translocation Dual Color FISH Probe
Product No. TR017

IGH

Probe Size Approximately 1550kb
Fluorophore FITC
Location 14q32
Also known as IGD1; IGH@; IGHJ; IGHV; IGHD@; IGHJ@; IGHV@; IGH.1@; IGHDY1

FOXP1

Probe Size Approximately 1180kb
Fluorophore TexRed
Location 3p14.1
Also known as MFH; QRF1; 12CC4; hFKH1B; HSPC215



Representative images of normal human cell (lymphocyte) stain with the dual color FISH probe. The left image is chromosomes at metaphase, and the right image is an interphase nucleus.