

Probe IGH/MYC, DY Translocation Dual Color FISH Probe  
Product No. TR030

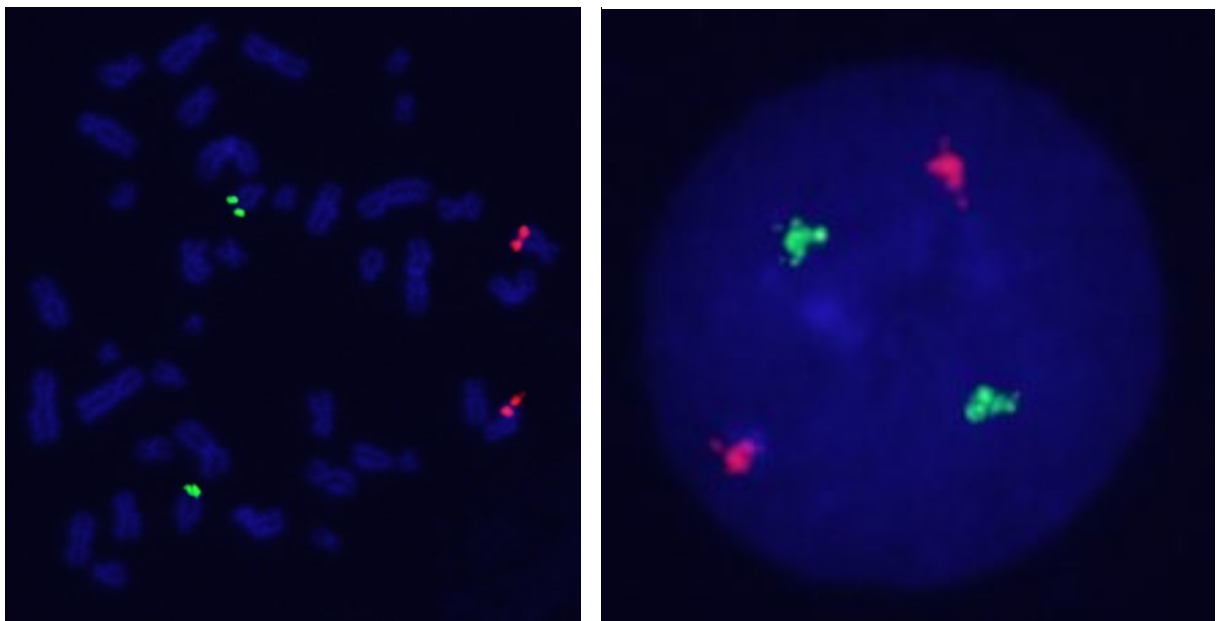
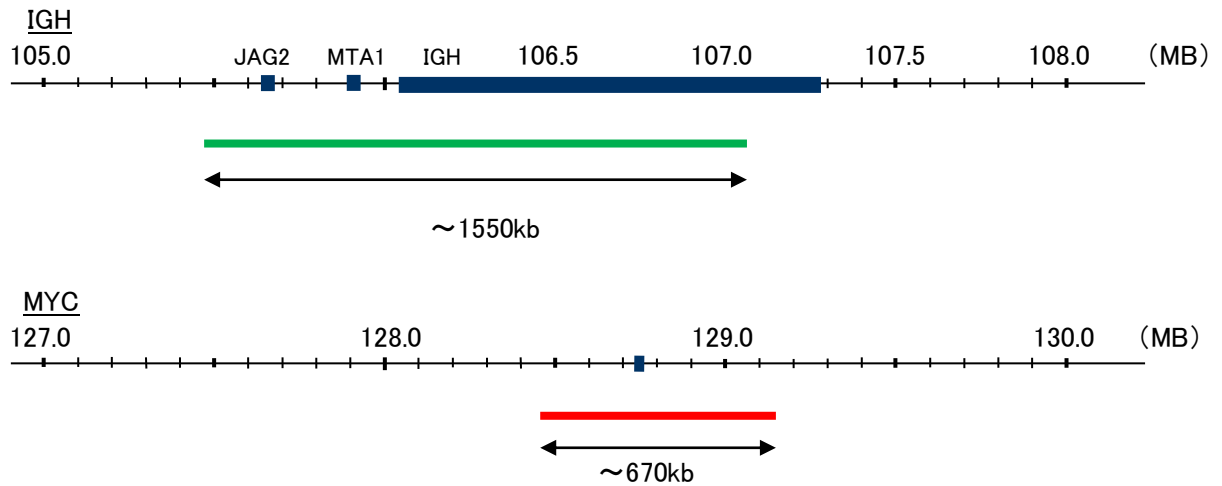
**IGH**

Probe Size Approximately 1550kb  
Fluorophore FITC  
Location 14q32  
Also known as IGD1; IGH@; IGHJ; IGHV; IGHD@; IGHJ@; IGHV@; IGH.1@; IGHDY1

**MYC**

Probe Size Approximately 670kb  
Fluorophore TexRed  
Location 8q24  
Also known as MRTL; MYCC; c-Myc; bHLHe39

Expire  
Storage 4°C



Representative images of normal human cell (lymphocyte) stain with the dual color FISH probe. The left image is chromosomes at metaphase, and the right image is an interphase nucleus.