

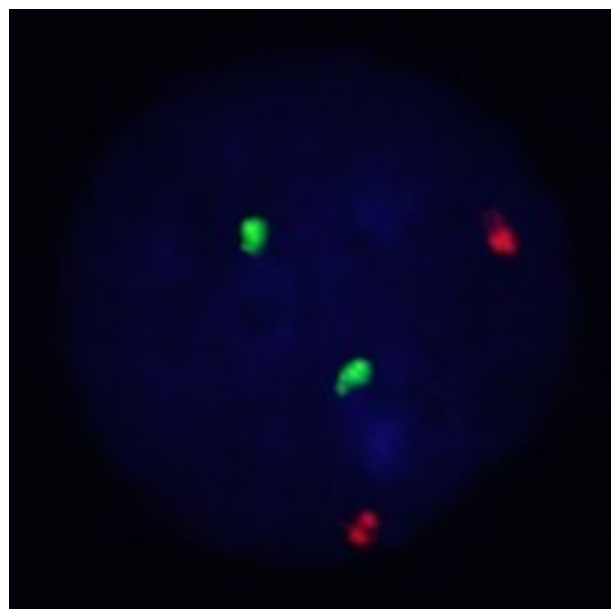
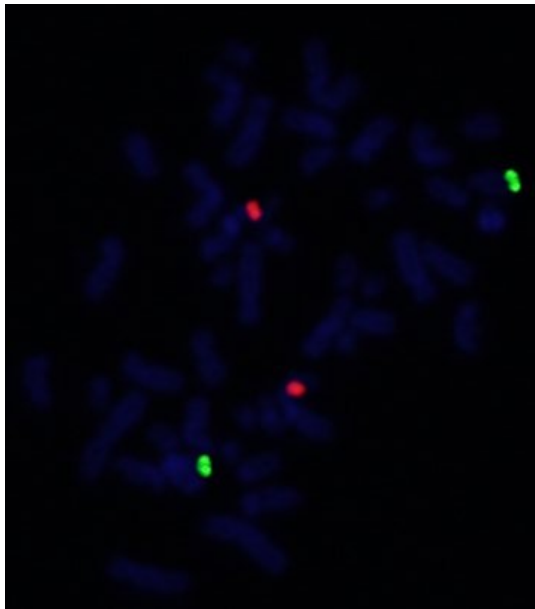
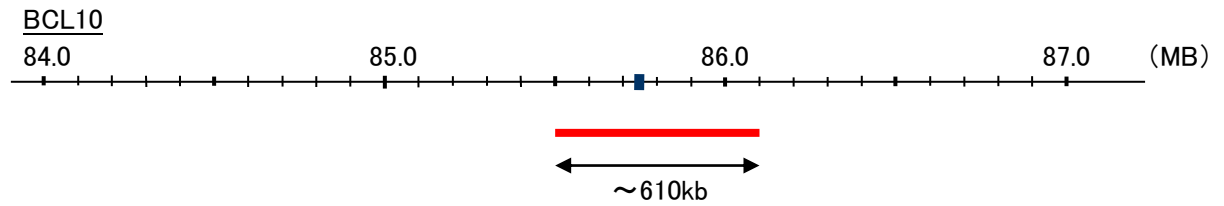
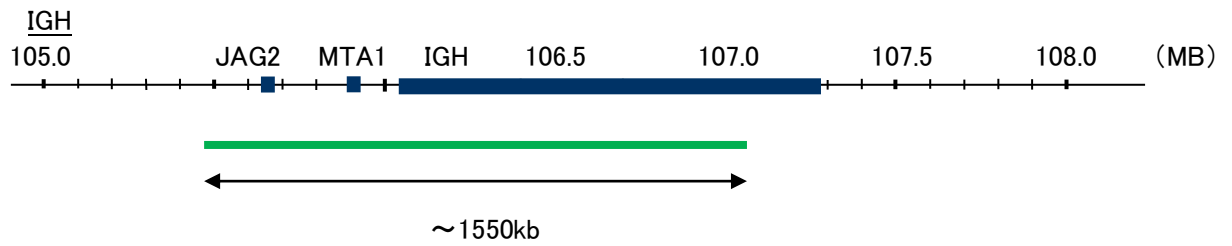
Probe IGH/BCL10, DY Translocation Dual Color FISH Probe  
Product No. TR029

**IGH**

Probe Size Approximately 1550kb  
Fluorophore FITC  
Location 14q32  
Also known as IGD1; IGH@; IGHJ; IGHV; IGHD@; IGHJ@; IGHV@; IGH.1@; IGHDY1

**BCL10**

Probe Size Approximately 610kb  
Fluorophore TexRed  
Location 1p22  
Also known as CLAP; mE10; CIPER; IMD37; c-E10; CARMEN



Representative images of normal human cell (lymphocyte) stain with the dual color FISH probe. The left image is chromosomes at metaphase, and the right image is an interphase nucleus.