

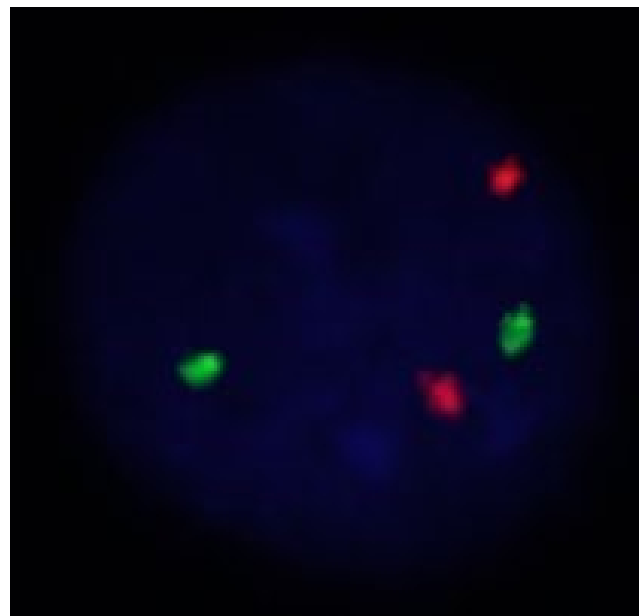
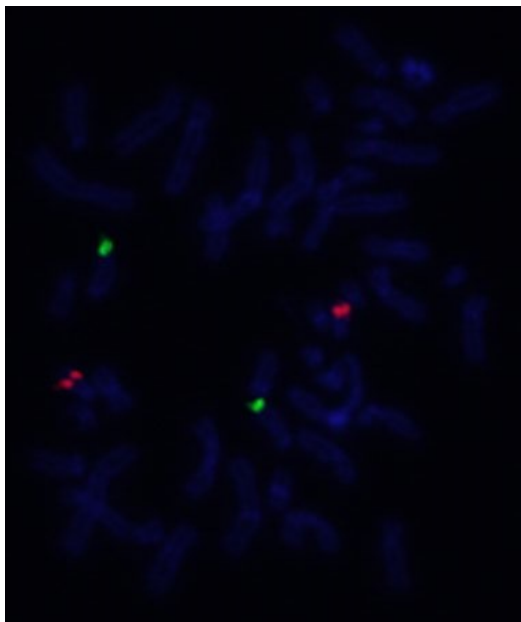
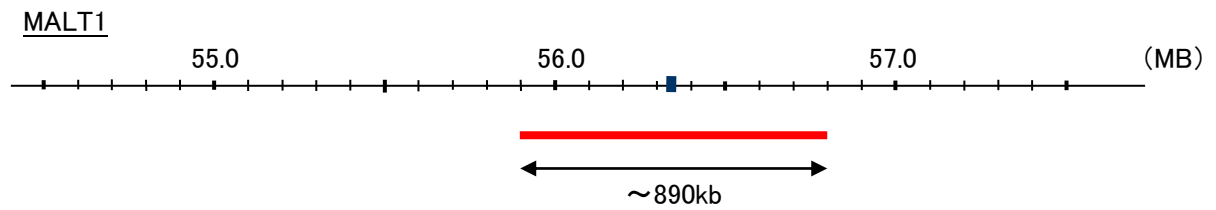
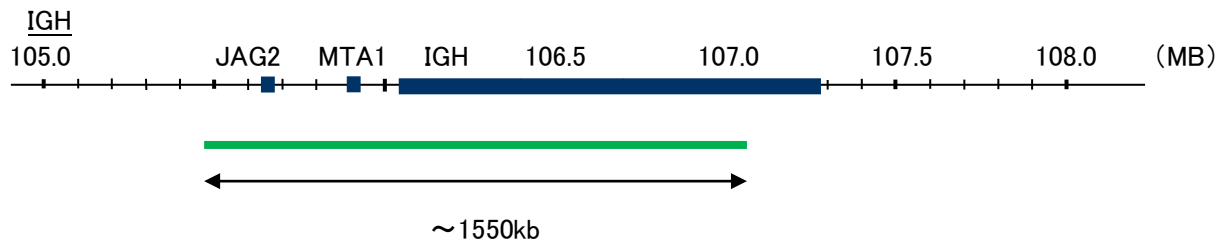
Probe IGH/MALT1, DY Translocation Dual Color FISH Probe
Product No. TR025

IGH

Probe Size Approximately 1550kb
Fluorophore FITC
Location 14q32
Also known as IGD1; IGH@; IGHJ; IGHV; IGHD@; IGHJ@; IGHV@; IGH.1@; IGHDY1

MALT1

Probe Size Approximately 890kb
Fluorophore TexRed
Location 18q21
Also known as MLT; MLT1; IMD12; PCASP1



Representative images of normal human cell (lymphocyte) stain with the dual color FISH probe. The left image is chromosomes at metaphase, and the right image is an interphase nucleus.