

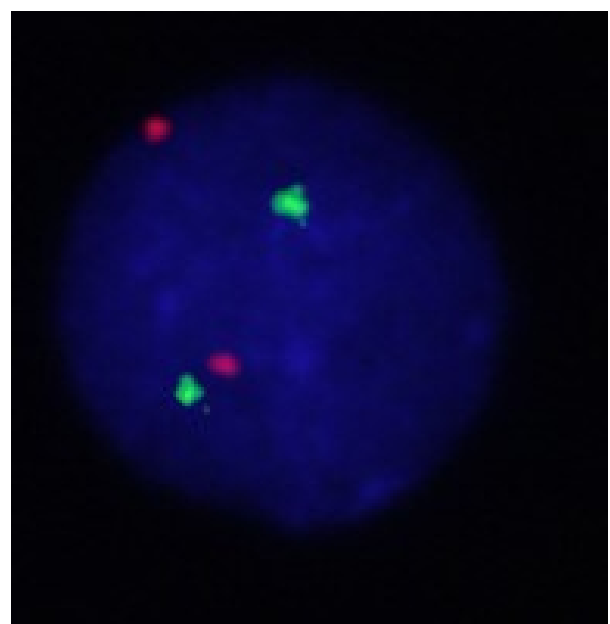
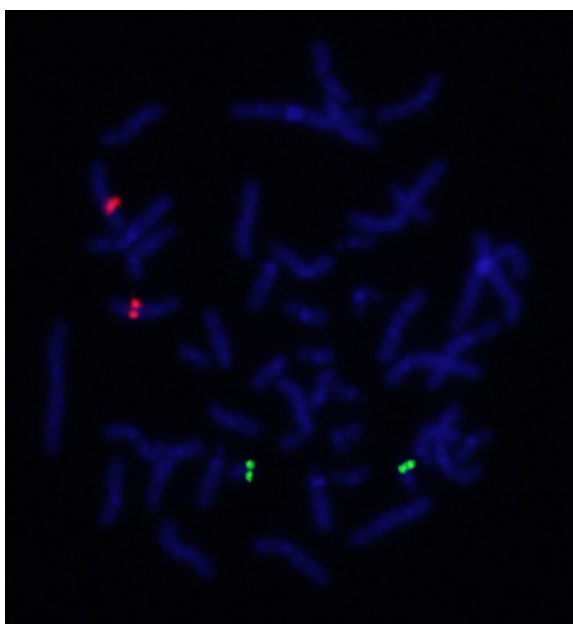
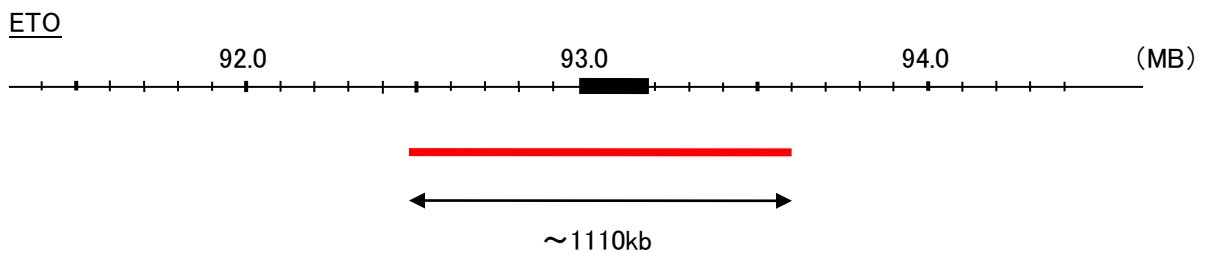
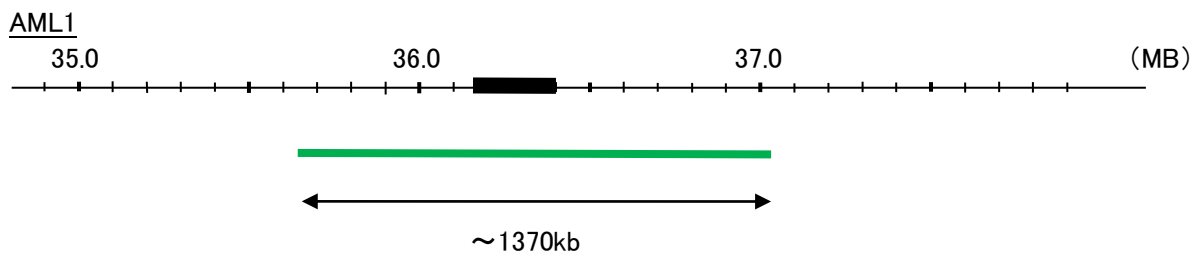
Probe AML1/ETO,DY Translocation Dual Color FISH Probe
Product No. TR005

AML1

Probe Size Approximately 1370kb
Fluorophore FITC
Location 21q22.12
Also known as RUNX1; CBFA2; EVI-1; AMLCR1; PEBP2aB; CBF2alpha; AML1-EVI-1; PEBP2alpha

ETO

Probe Size Approximately 1110kb
Fluorophore TexRed
Location 8q21.3
Also known as CDR; RUNX1T1; MTG8; AML1T1; ZMYND2; CBFA2T1; AML1-MTG8



Representative images of normal human cell (lymphocyte) stain with the dual color FISH probe. The left image is chromosomes at metaphase, and the right image is an interphase nucleus.