

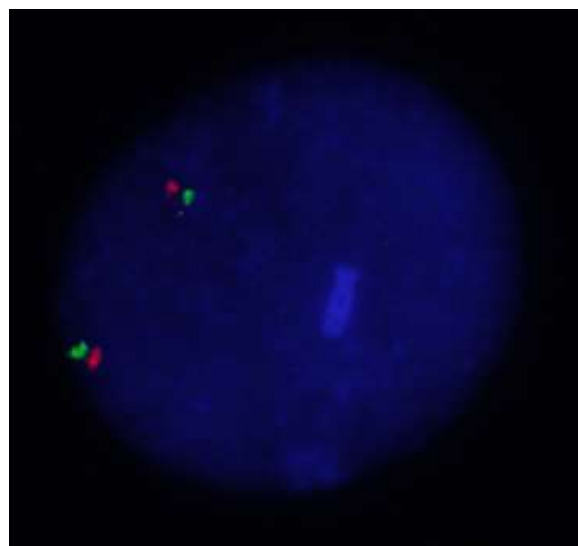
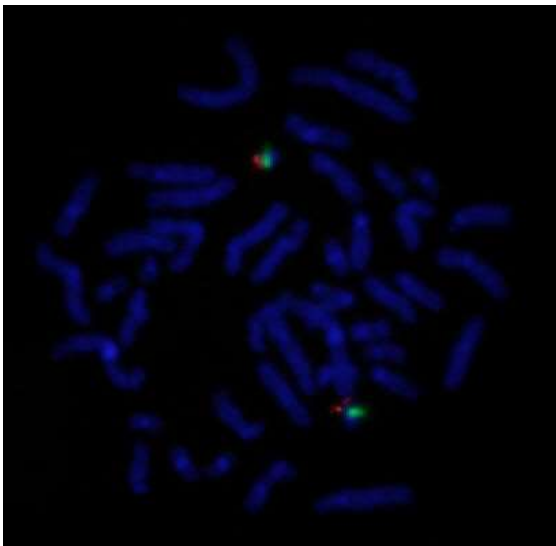
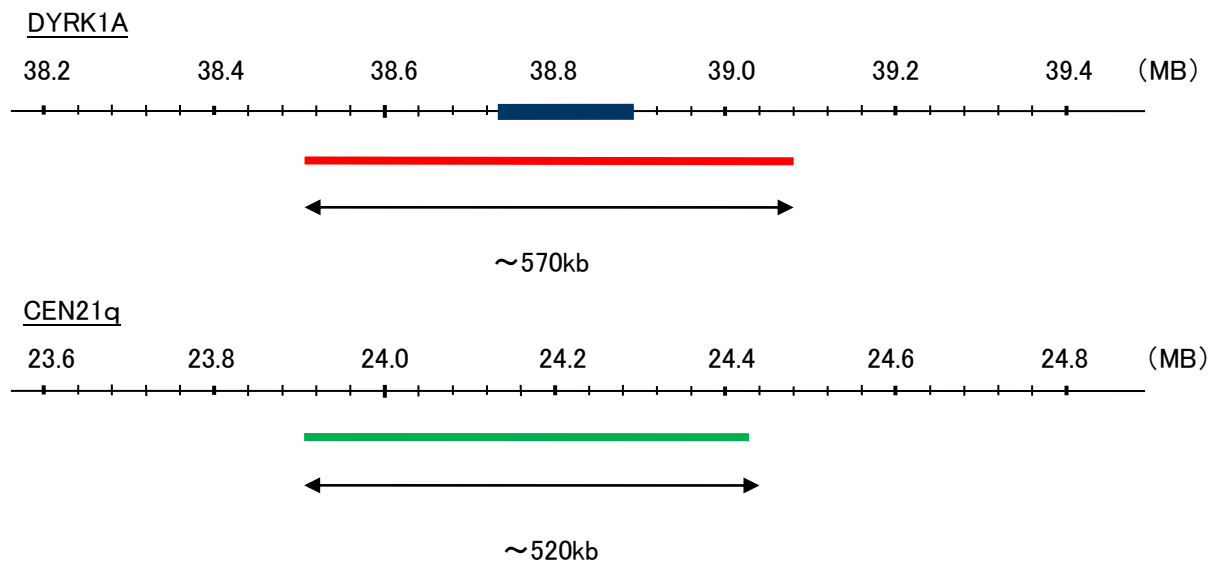
Probe DYRK1A(Down syndrome critical region)/CEN21q Dual Color FISH Probe
Product No. GC015

DYRK1A

Probe Size Approximately 570kb
Fluorophore TexRed
Location 21q22.13
Also known as MNB; DYRK; HP86; MNBH; MRD7; DYRK1

CEN21q

Probe Size Approximately 520kb
Fluorophore FITC
Location 21q21.2



Representative images of normal human cell (lymphocyte) stain with the dual color FISH probe. The left image is chromosomes at metaphase, and the right image is an interphase nucleus.