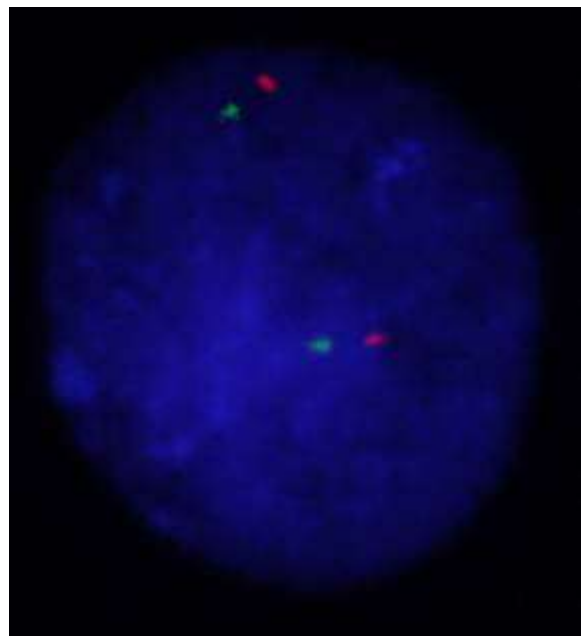
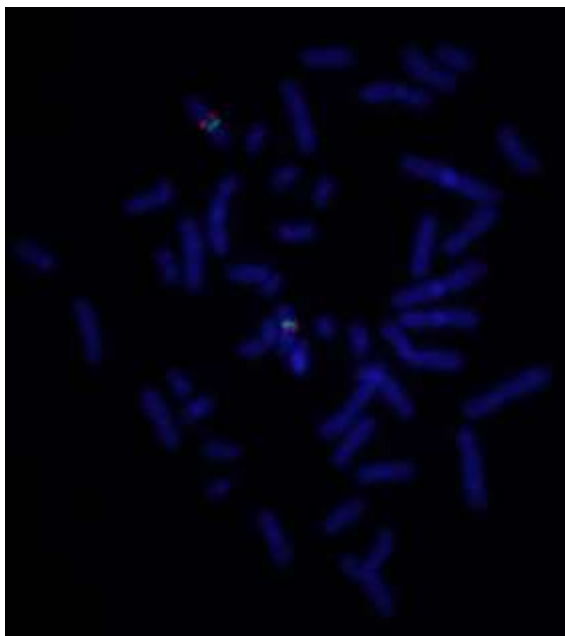
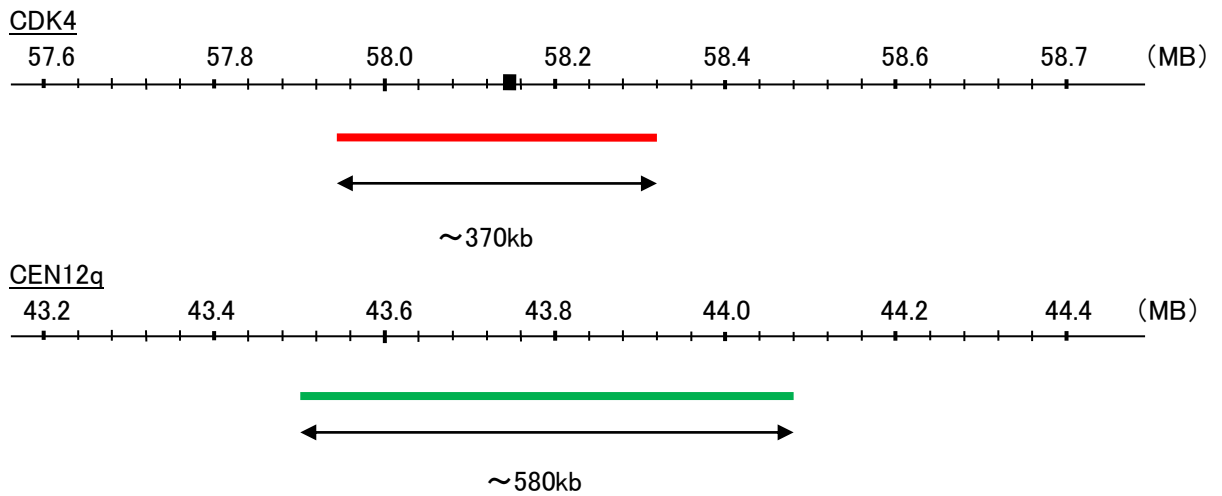


Probe CDK4/CEN12q Dual Color FISH Probe  
Product No. GC038

**CDK4**  
Probe Size Approximately 370kb  
Fluorophore TexRed  
Location 12q14.1  
Also known as CMM3; PSK-J3

**CEN12q**  
Probe Size Approximately 580kb  
Fluorophore FITC  
Location 12q12



Representative images of normal human cell (lymphocyte) stain with the dual color FISH probe. The left image is chromosomes at metaphase, and the right image is an interphase nucleus.