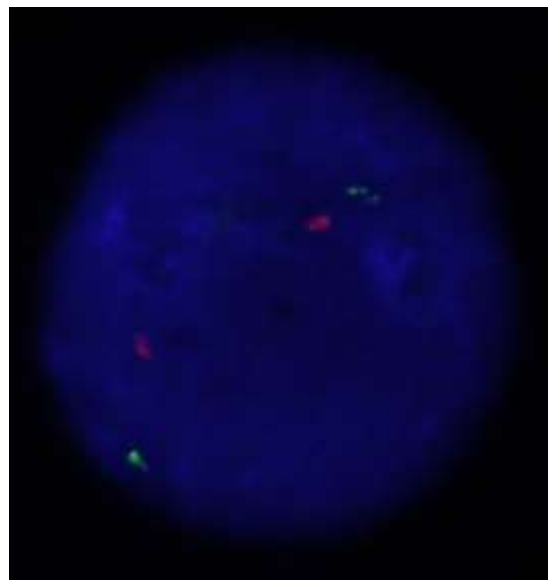
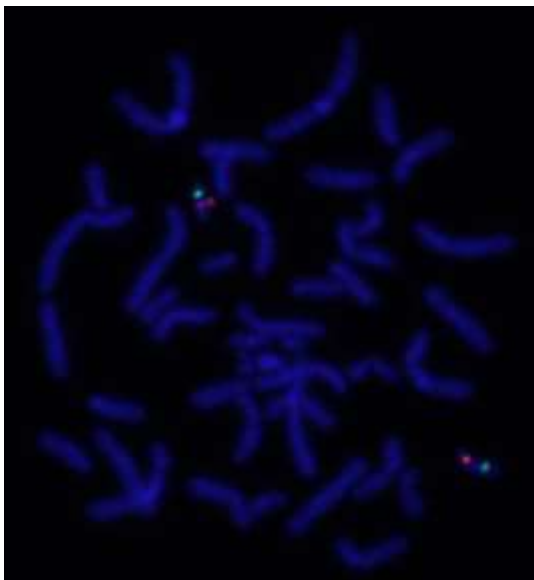
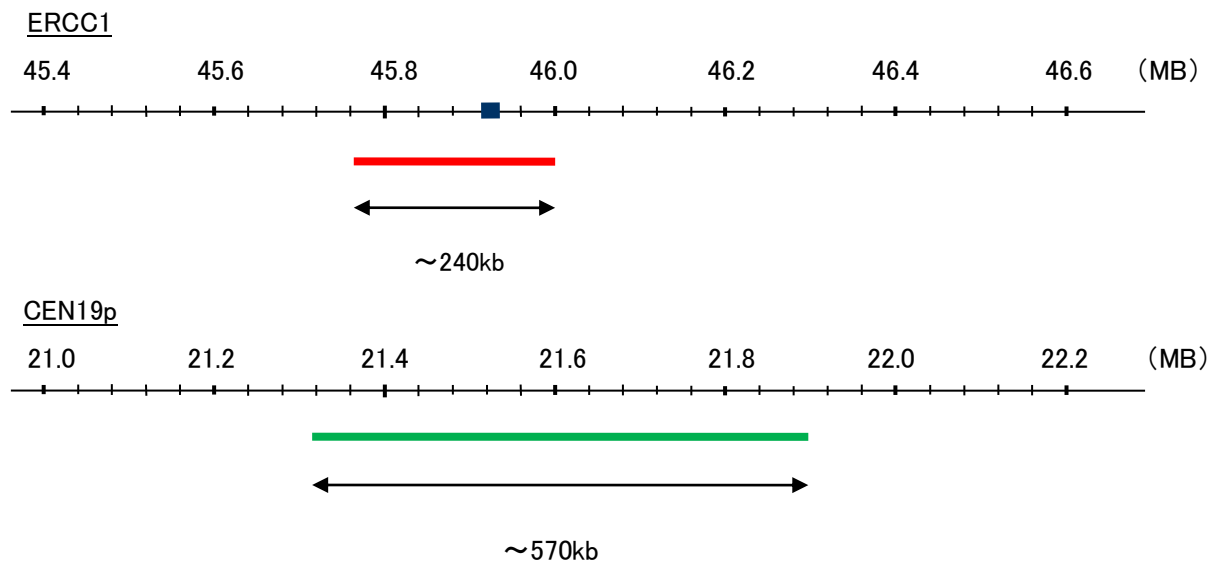


Probe ERCC1/CEN19p Dual Color FISH Probe
Product No. GC043

ERCC1
Probe Size Approximately 240kb
Fluorophore TexRed
Location 19q13.32
Also known as UV20; COFS4; RAD10

CEN19p
Probe Size Apporoximately 570kb
Fluorophore FITC
Location 19p12



Representative images of normal human cell (lymphocyte) stain with the dual color FISH probe. The left image is chromosomes at metaphase, and the right image is an interphase nucleus.