

Probe MDM4/CEN1q Dual Color FISH Probe  
Product No. GC059

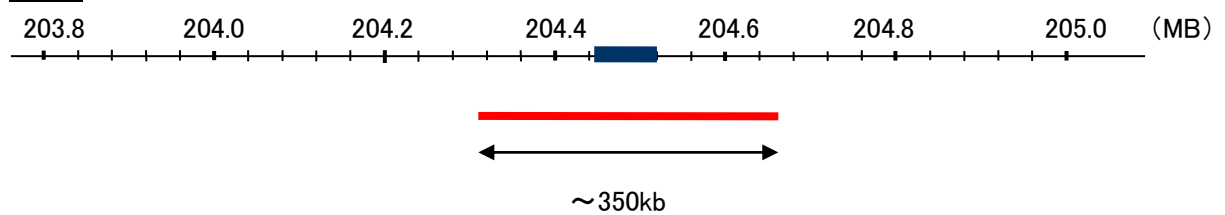
MDM4

Probe Size Approximately 350kb  
Fluorophore TexRed  
Location 1q32  
Also known as HDMX; MDMX; MRP1

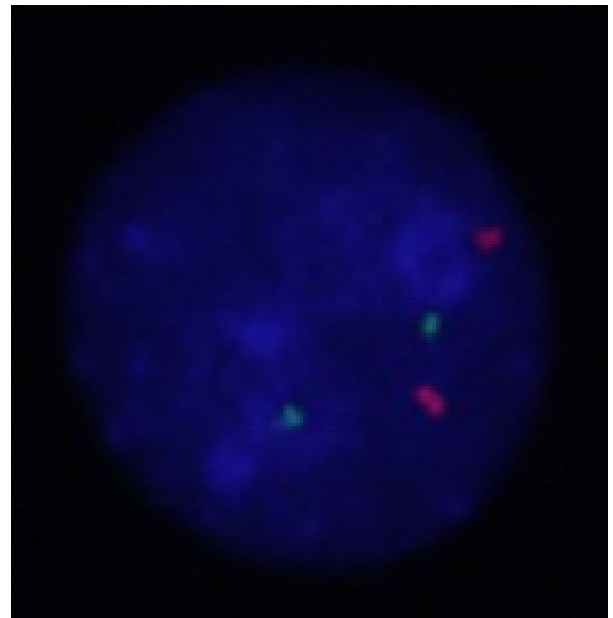
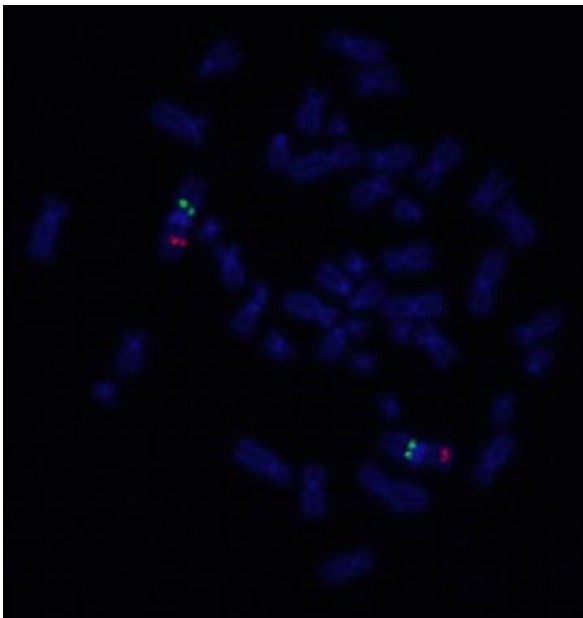
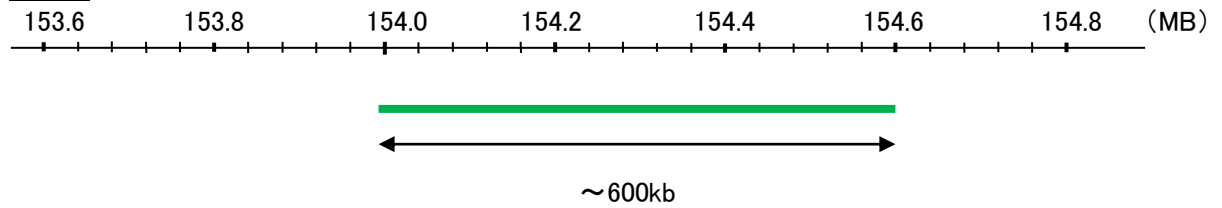
CEN1q

Probe Size Approximately 600kb  
Fluorophore FITC  
Location 1q21.3

MDM4



CEN1q



Representative images of normal human cell (lymphocyte) stain with the dual color FISH probe. The left image is chromosomes at metaphase, and the right image is an interphase nucleus.