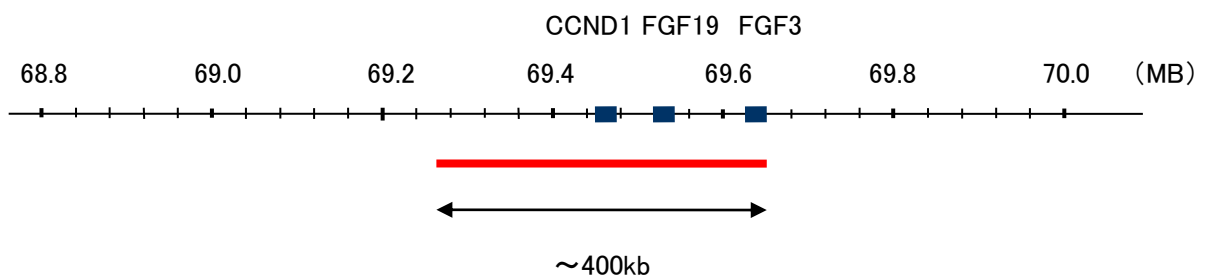


Probe CCND1/CEN11p Dual Color FISH Probe
Product No. GC010

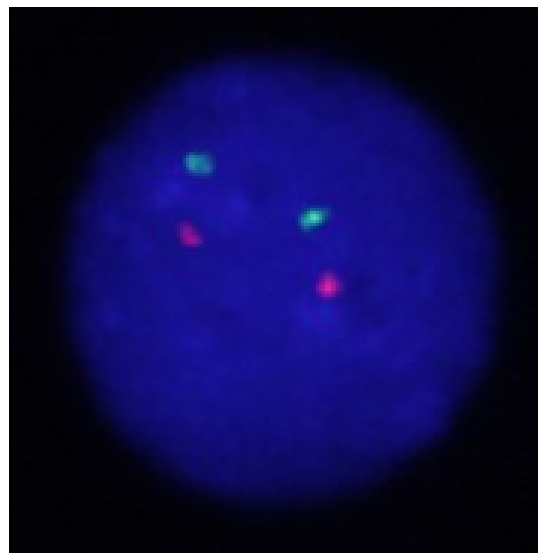
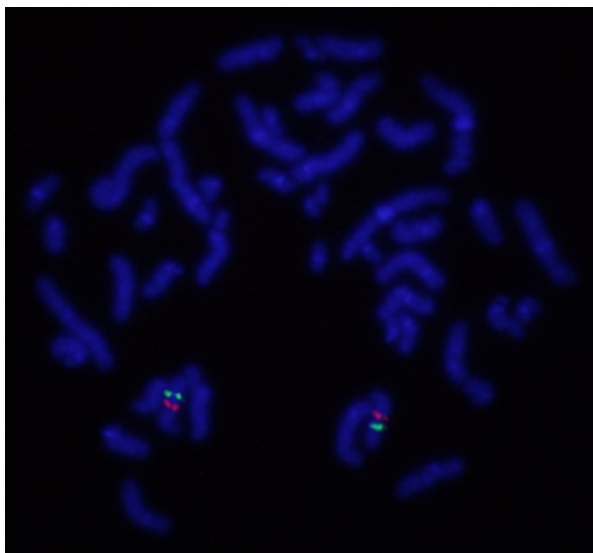
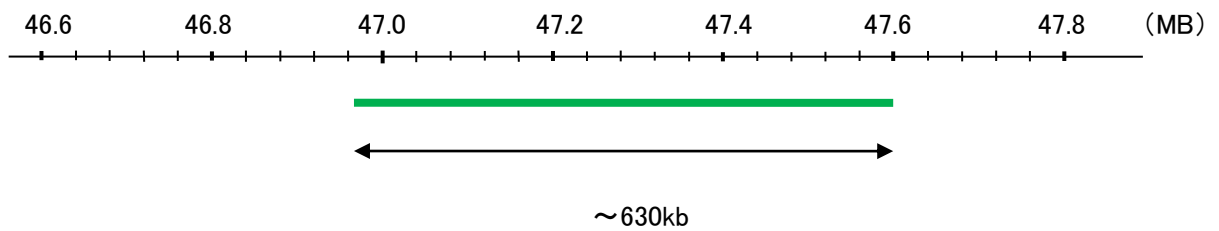
CCND1
Probe Size Approximately 400kb
Fluorophore TexRed
Location 11q13
Also known as BCL1; PRAD1; U21B31; D11S287E

CEN11p
Probe Size Approximately 630kb
Fluorophore FITC
Location 11p11.12

CCND1



CEN11p



Representative images of normal human cell (lymphocyte) stain with the dual color FISH probe. The left image is chromosomes at metaphase, and the right image is an interphase nucleus.