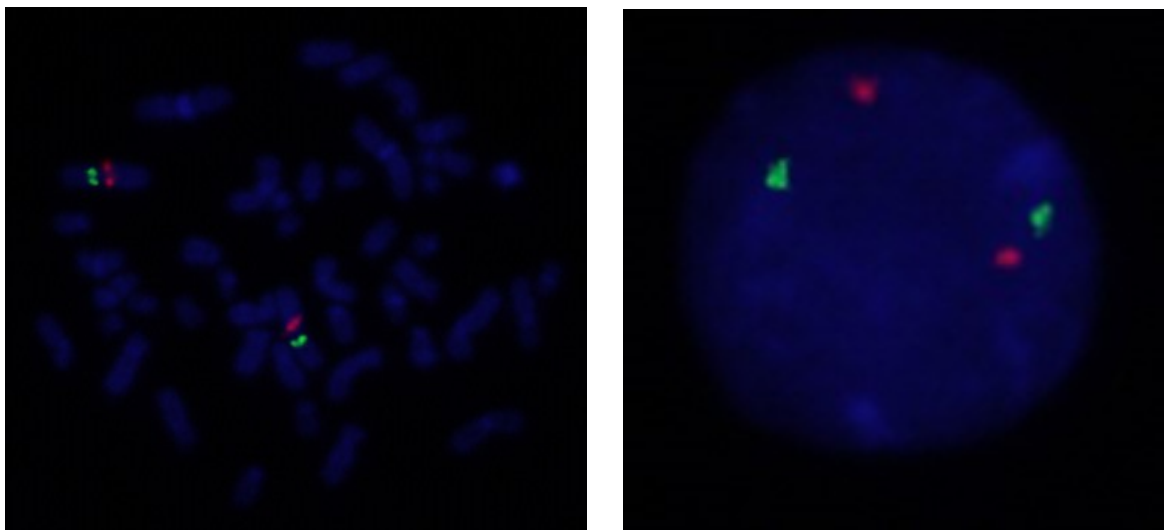
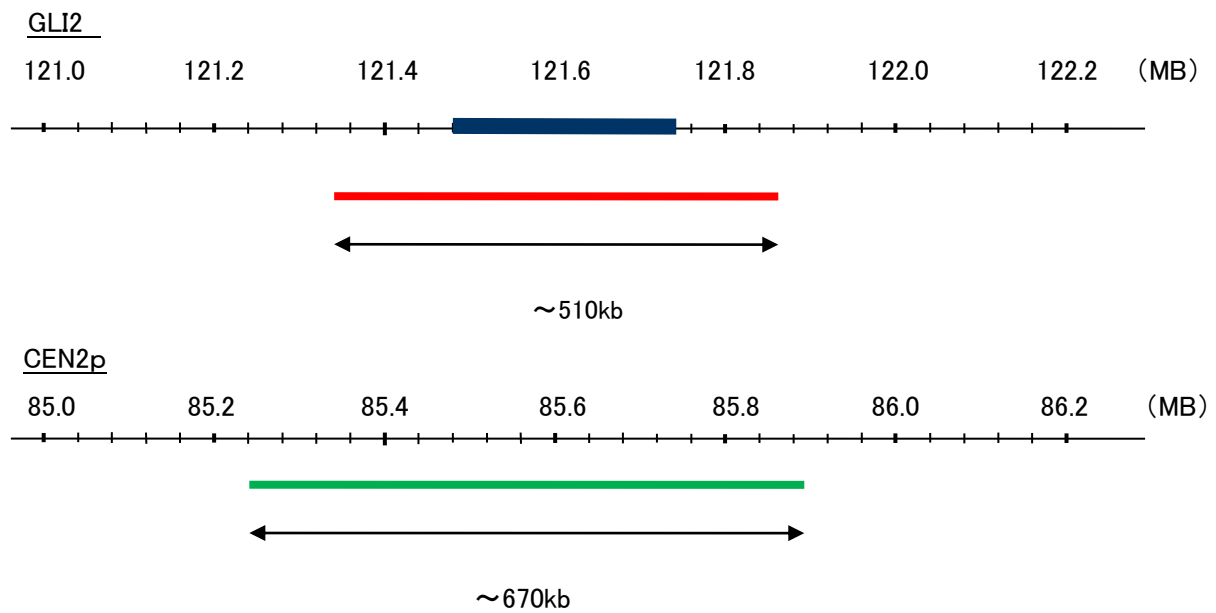


Probe GLI2/CEN2p Dual Color FISH Probe
Product No. GC105

GLI2
Probe Size Approximately 510kb
Fluorophore TexRed
Location 2q14.2
Also known as CJS; HPE9; PHS2; THP1; THP2

CEN2p
Probe Size Approximately 670kb
Fluorophore FITC
Location 2p11.2



Representative images of normal human cell (lymphocyte) stain with the dual color FISH probe. The left image is chromosomes at metaphase, and the right image is an interphase nucleus.