

Probe PARP-1/CEN1q Dual Color FISH Probe  
Product No. GC107

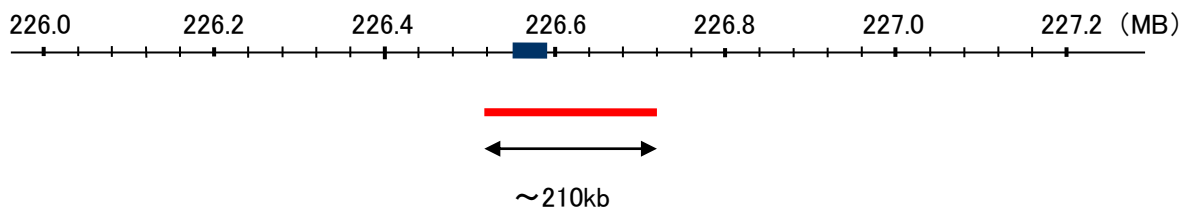
PARP-1

Probe Size Approximately 210kb  
Fluorophore TexRed  
Location 1q41-42  
Also known as PARP; PPOL; ADPRT; ARTD1; ADPRT1; PARP-1; ADPRT 1; pADPRT-1

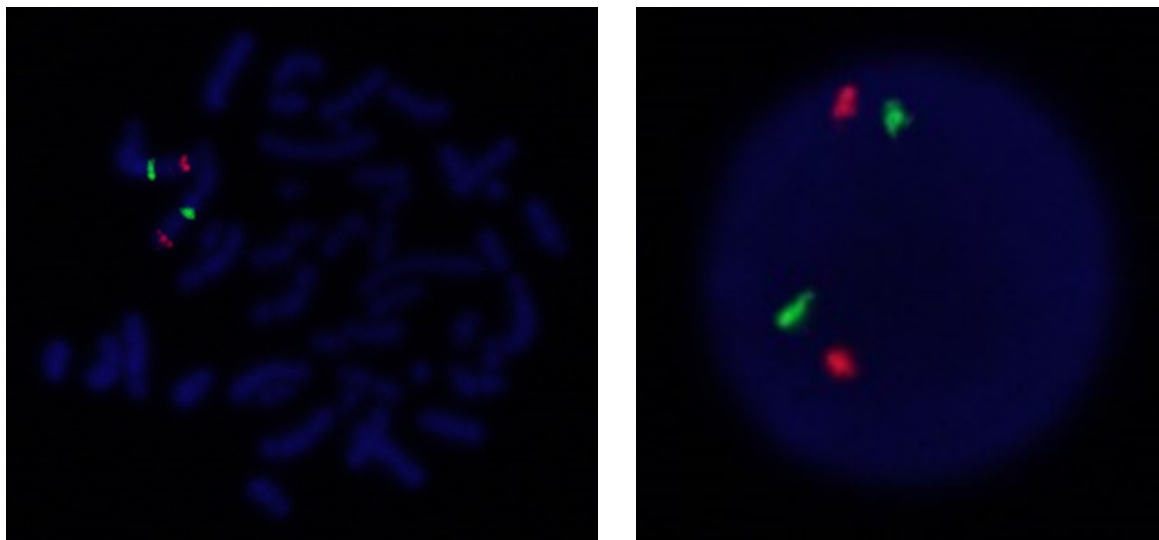
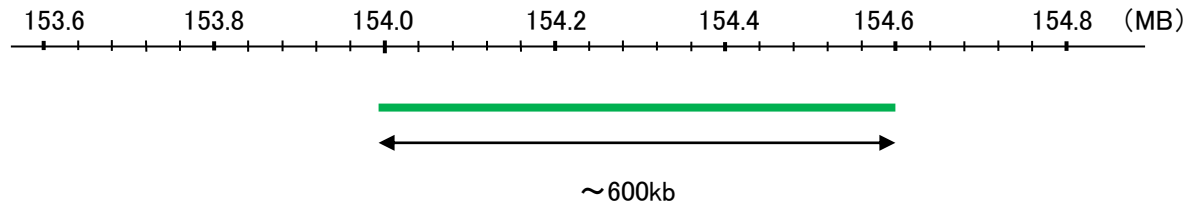
CEN1q

Probe Size Approximately 600kb  
Fluorophore FITC  
Location 1q21.3

PARP-1



CEN1q



Representative images of normal human cell (lymphocyte) stain with the dual color FISH probe. The left image is chromosomes at metaphase, and the right image is an interphase nucleus.