

Probe FGF9/CEN13q Dual Color FISH Probe
Product No. GC147

FGF9

Probe Size Approximately 150kb
Fluorophore TexRed
Location 13q11
Also known as GAF; FGF-9; SYNS3; HBFG-9; HBGF-9

CEN13q

Probe Size Approximately 550kb
Fluorophore FITC
Location 13q12.11

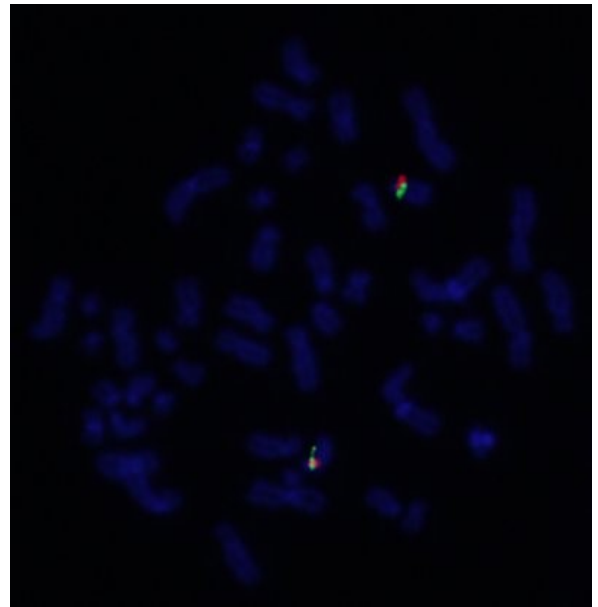
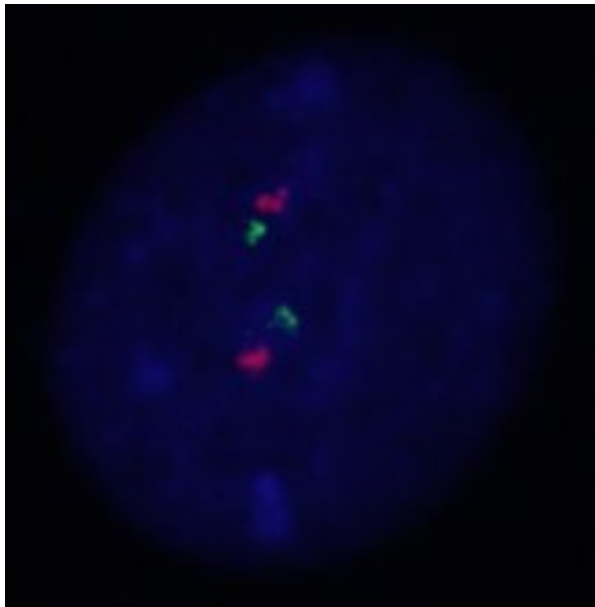
FGF9

21.8 22.0 22.2 22.4 22.6 22.8 23.0 (MB)



CEN13q

27.4 27.6 27.8 28.0 28.2 28.4 28.6 (MB)



Representative images of normal human cell (lymphocyte) stain with the dual color FISH probe. The left image is chromosomes at metaphase, and the right image is an interphase nucleus.