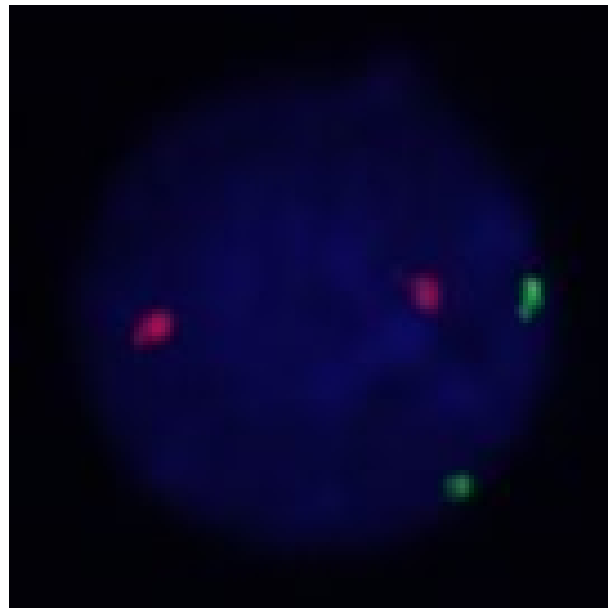
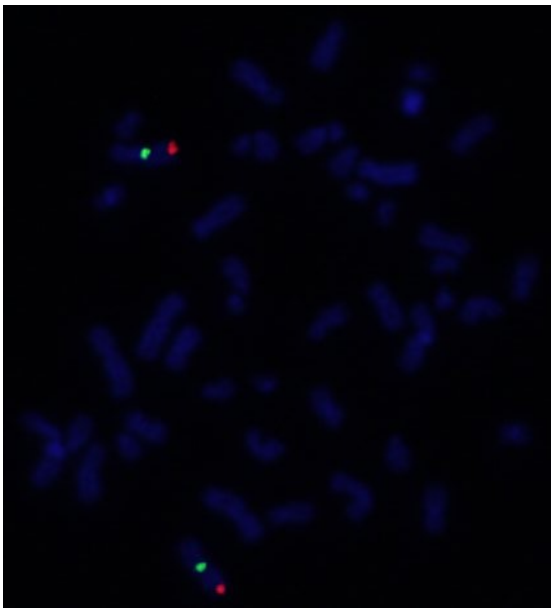
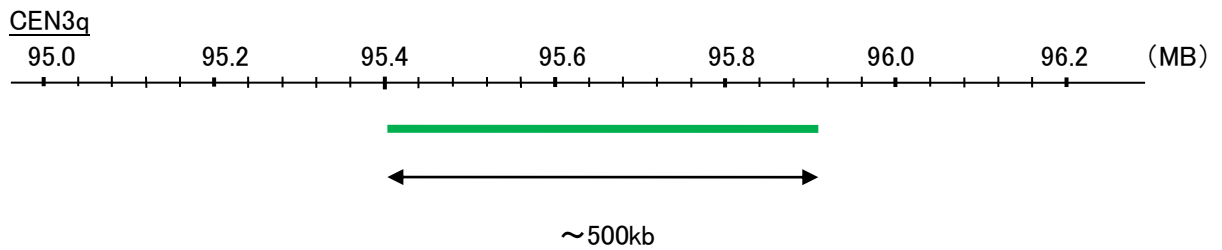
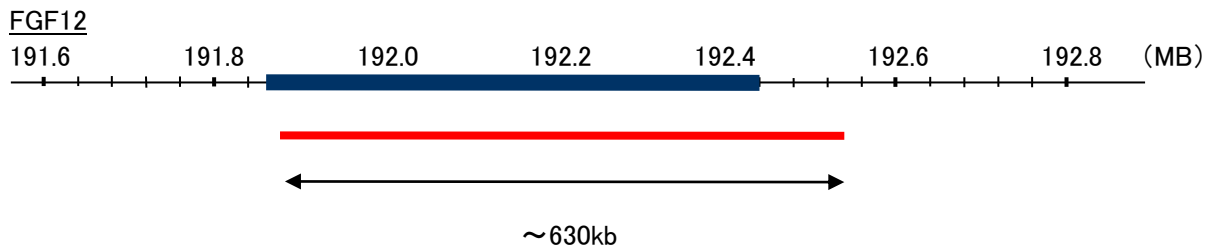


Probe FGF12/CEN3q Dual Color FISH Probe  
Product No. GC164

FGF12  
Probe Size Approximately 630kb  
Fluorophore TexRed  
Location 3q28  
Also known as FHF1; FGF12B

CEN3q  
Probe Size Approximately 500kb  
Fluorophore FITC  
Location 3q12.1



Representative images of normal human cell (lymphocyte) stain with the dual color FISH probe. The left image is chromosomes at metaphase, and the right image is an interphase nucleus.