

Probe Xq27/CENXp Dual Color FISH Probe
Product No. GC169

Xq27

Probe Size Approximately 250kb
Fluorophore TexRed
Location Xq27.3

CENXp

Probe Size Approximately 550kb
Fluorophore FITC
Location Xp11.22

Xq27

146.4 146.6 146.8 147.0 147.2 147.4 147.6 (MB)



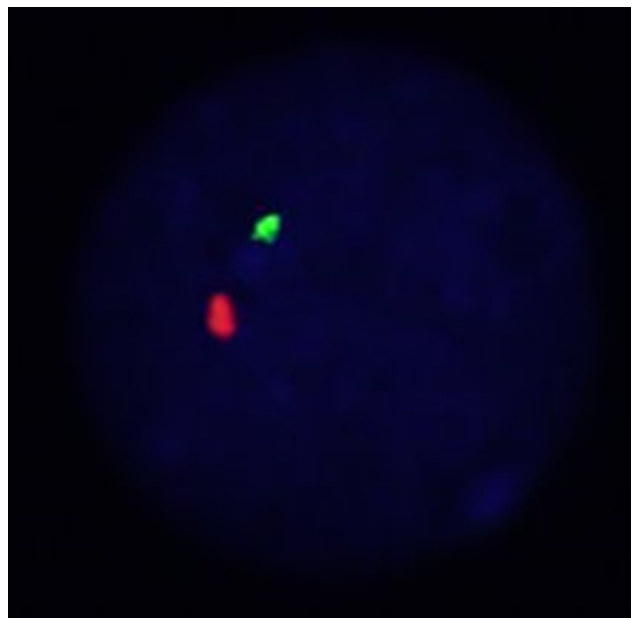
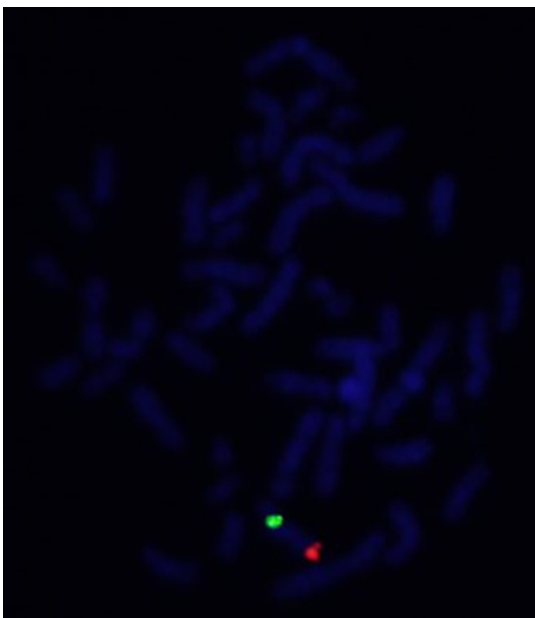
~250kb

CENXp

48.8 49.0 49.2 49.4 49.6 49.8 50.0 (MB)



~550kb



Representative images of normal human cell (lymphocyte) stain with the dual color FISH probe. The left image is chromosomes at metaphase, and the right image is an interphase nucleus.